

Process Modeling for Compliance, Agility and SOA

eClarus Business Process Modeler Community Version™

FREE!

Capturing business processes and rules in flow charts has long been an important early step in quality, optimization, compliance, and automation projects. Drawing templates for several process notations, including powerful standard BPMN, are available for use in general business drawing tools. But business drawing tools are too limited for optimal collaboration with IT. Process diagrams must be recreated, and iterative cycles are clumsy. Business and IT tend to diverge.

A model-based diagramming toolset is much better for organizations adopting Model Driven Development, with all its advantages in agility and Service Oriented Architecture migration. But it must be usable, shareable, and understandable by all team members. At the other extreme from general drawing tools, expensive, proprietary BPM enterprise software is just too complex and costly for many organizations.

The promise of BPMN for agile process development, reuse, and control is delivered now!

eClarus BP Modeler Community Version is a simple, powerful, free BPMN process diagramming tool, built on the Eclipse modeling framework. Used alone, this focused tool helps business process users, stakeholders, and analysts to communicate and collaborate more effectively.

But using it with eClarus' family of process modeling products is the best way for many organizations to bring extended team collaboration to process improvement, control, compliance, quality, and as a key enabling step toward effective model driven development for SOA.

- Enables business process agility and value chain integration, while cutting backlogs of IT application changes in your own enterprise and with your business partners.
- Improves business process control and insight by business owners, in both automated and manual processes.
- Builds open-standard BPMN-compliant process diagrams with correct-by-construction BPMN rules enforcement, speeding learning of BPMN and cutting rework.
- Supports business-facing BPMN functionality, including process hierarchies, pools, roles/swim lanes, activities, decision gateway and flow controls, events and message constructs, with annotation.

❖ Shared process model improves collaboration: technical Business Analysts and Software Architects can directly extend BPMN process models created in Community Version into executable code for process services. Community Version users can also inspect and confirm process details, using models extracted and abstracted from software services by more technical Modeler versions, viewing BPMN process diagrams instead of code.



Process Modeling for Compliance, Agility and SOA

eClarus Business Process Modeler Community Version™

FREE!

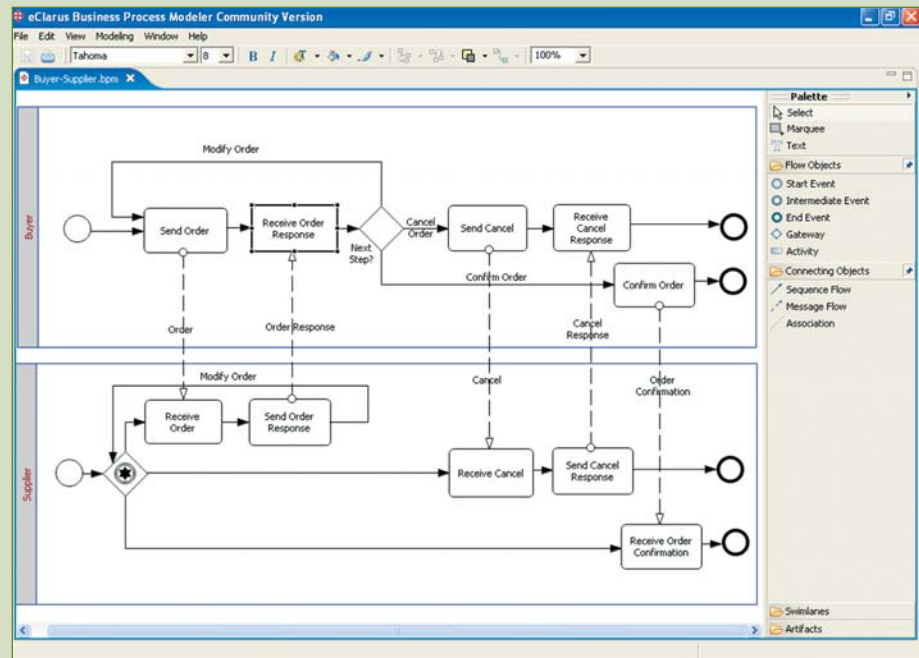


Figure. Business Process Modeler Community Version Context sensitive Help Diagram pane, with resizable drawing & object palette

Key Features:

Visual Process Diagramming

- Auto-layout and alignment
- Find/replace, Nested Redo/Undo
- Rectilinear or oblique connector style
- Format line color, fill color, font
- Set preferences for initial colors, shapes
- Diagram scaling and zooming
- Rulers and grid options
- Print diagrams, with page tiling

BPMN Modeling

- Visual editor
- Pools, roles/swim lanes
- Process hierarchies
- Human and automated activities
- Flow controls, decision constructs
- Events and messages
- Artifacts and annotation

Documentation and Reporting

- Export BPMN diagram as SVG Image
- Context sensitive Help

Requirements:

Windows XP® (or Linux), Sun Java® Runtime (JRE 1.5 or 1.4)

Compatibility:

- Shares BPMN metamodel and architecture with eClarus Business Process Modeler for Business Analysts™ and for SOA Architects™ providing seamless teamwork for process development, integration, and modification
- Industry standard BPMN supported by all major SOA platform vendors, including Microsoft, Oracle, IBM, SAP, and BEA



717 Industry Drive
Seattle, WA 98188
(206) 331-5673

inquiry@eclarus.com
www.eclarus.com

Copyright and Trademark 2005-2006 eClarus Software, LLC
Registered Trademarks are exclusive property of their respective owners.