



DRIVELINE COMPONENTS CATALOG
COMPANION FLANGES



J300P-1
JANUARY 2008

Supersedes
Section 1, Dated
April 2005



To identify any splined companion flange, there are ten pieces of required information:

1. Center Hole type (Splined, Round or Tapered hole)
2. Spline size and tooth count
3. Pilot diameter and type (Male / Female)
4. Bolt circle diameter
5. Bolt hole diameter and if the hole is drilled or tapped (drilled-D or tapped-T)
6. Number of bolt holes
7. Ground hub diameter (where applicable)
8. Brake drum pilot diameter
9. Length of through hole
10. Flange face to end of hub

Example: to find a companion flange with a 2.143-41 involute splined hole, a 7.750 female pilot that includes twelve bolts:

1. Find the **Splined Hole** section of this catalog;
2. Find the **2.143-41 Involute Spline** sub-heading;
3. Find the Female Pilot diameter of **7.750**
4. Find the Bolt circle diameter of **7.250**
5. Find the Drilled Bolt hole diameter of **.440**
6. Find a Number of bolt holes of **12**
7. Find the Ground hub diameter of **2.939**
8. Find the Brake drum pilot diameter (**not applicable in this example**)
9. Find the Length of through hole of **2.495**
10. Find the Flange face to end of hub of **3.500**

Locate the part number that matches the dimension of your part: example **6.5-1-2941**

Be sure to read any notes that are provided.

J300P-1

COMPANION FLANGES



① **Spline Hole**

D	C	B	Bolt Hole		Brake Drum Pilot Diameter	E	F	G	Figure	Companion Flange Assembly (includes slinger when listed)	Slinger Part Number	Companion Flange Part Number	Series
Spline Hole Major Diameter	Pilot Diameter F-Female M-Male	Bolt Circle Diameter	Diameter D-Drilled T-Tapped	# of Holes		Ground Hub Diameter	Length Thru Hole	Flange Face to End of Hub					

2.114-32 Involute Spline

2.114 5.312 M 6.125 .385 D 8 — 3.000 2.250 2.844 3 5-1-6731X[■] 232200 5-1-6721[▲] 1610
.424 deep counterbore at hub end

2.114 6.625 F 6.125 .375 D 8 — 3.000 2.245 2.844 3 5-1-6701X 232200 5-1-6691 1610
.424 deep counterbore at hub end; 5-1-6691 will be replaced by 5-1-6701X when supply is exhausted

2.143-41 Involute Spline

2.143 7.750 F 7.250 .440 D 12 — 2.939 2.495 3.500 4

2.149-16 Spline

2.149 6.625 F 6.125 .385 D 8 — 2.938 3.000 3.750 3

③ ④ ⑤ ⑥ ⑦ ⑧ ⑨ ⑩

6.5-1-2941 1810

5-1-2551[•] 1610

Part Number



To identify a non- splined companion flange, there are nine pieces of required information:

1. Center hole type (Round or Tapered hole)
2. Type of flange (Circular or Rectangular)
3. Series
4. Hole size/ bore diameter
5. Keyway width
6. Bolt hole diameter and if the hole is drilled or tapped (drilled-D or tapped-T)
7. Ground hub diameter (where applicable)
8. Length of through hole
9. Flange face to end of hub

Example: to find a 1610 Series circular type companion flange with a straight round hole, a 3.500 bore diameter, a keyway width of .875, with .375-24 tapped bolt holes, 6.8750 hub diameter, and the flange face to end of hub dimension of 5.0 (see example below):

- 1/2. Find the **Circular Type with Straight Round Hole** section of this catalog
3. Find the **1610 Series** sub-heading
4. Find the bore diameter of **3.500**
5. Find the keyway width of **.875**
6. Find the tapped bolt hole diameter of **.375-24**
7. Find the hub diameter of **6.8750**
8. Find the flange face to end of hub of **5.0000**

Locate the part number that matches the dimension of your part: example 5-1-883-1

Be sure to read any notes that are provided.

J300P-1

COMPANION FLANGES



① Circular Type - Straight Round Hole ②

D Bore Diameter	K Keyway Width	C Pilot Diameter F-Female M-Male	Figure	Bolt Hole Diameter D-Drilled T-Tapped	E Hub Diameter	F Flange Face to End of Hub	Companion Flange Part Number
1610 SERIES (Continued)							
A-6.875			B-6.125 DIA. (8 HOLES)				
2.500	.625	6.625 F	1	.375 D	5.250	3.500	5-1-873-6
2.750	.625	6.625 F	1	.375 D	5.250	3.500	5-1-873-7
2.938	.750	6.625 F	1	.375 D	5.250	3.500	5-1-873-8
3.000	.750	6.625 F	1	.375 D	5.250	3.500	5-1-873-9
3.125	—	6.625 F	2	.375-24 T	6.875	5.000	5-1-883
3.500	.875	6.625 F	2	.375-24 T	6.875	5.000	5-1-883-1

Part Number

Footnotes for parts and assemblies that are discontinued, will be discontinued upon depletion of stock, or not sold separately, are indicated by a symbol next to the part number. Match the symbol to the appropriate status at the bottom of the page. All other footnotes are located immediately below the yoke dimensional data.

Important Notice: The data listed herein is correct to the best of our knowledge and belief; having been compiled from reliable and official sources of information. However, WE CANNOT ASSUME ANY RESPONSIBILITY for possible error.



Spline Hole

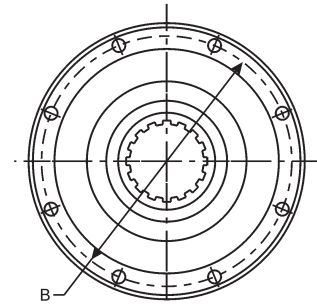
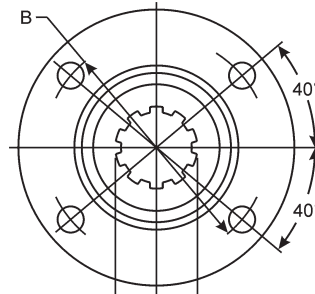
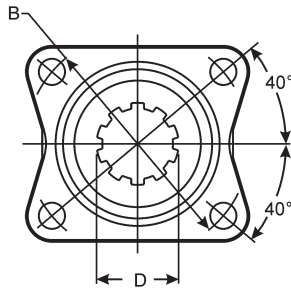
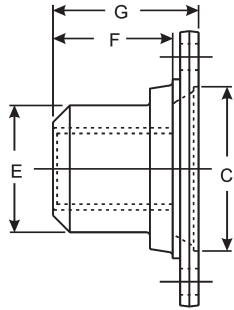


Figure 1

Figure 2

Figure 3

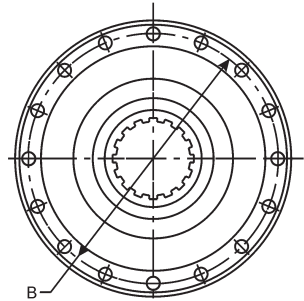
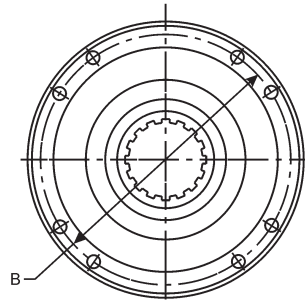
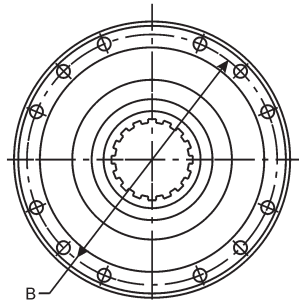


Figure 4

Figure 5

Figure 6

D Spline Hole Major Diameter	C Pilot Diameter F-Female M-Male	B Bolt Circle Diameter	Bolt Hole		E Ground Hub Diameter	F Length Thru Hole	G Flange Face to End of Hub	F i g u r e	Companion Flange Assembly (includes slinger when listed)	Slinger Part Number	Companion Flange Part Number	Series	
			Diameter D-Drilled T-Tapped	# of Holes									
1.145-26 Involute Spline													
1.145	2.750 M	3.750	.438-20 T	4	—	1.547	1.500	2.109	2		3-1-4371	1350	
1.146-26 Involute Spline													
1.146	2.375 F	3.125	.375 D	4	2.550	1.554	1.500	2.594	1	2-1-1881X	15099	2-1-1871 [▲]	1310
1.229-28 Involute Spline													
1.229	2.750 M	3.750	.438-20 T	4	—	1.844	1.375	2.062	1		2-1-2341	1330	
1.250-10 Spline													
1.250	2.375 F	3.125	.375 D	4	2.500	1.750	2.000	2.688	1		2-1-1641	1310	
1.250	2.750 M	3.750	.438 D	4	—	2.000	1.750	2.312	1		3-1-3851	1350	
1.276-29 Involute Spline													
1.276	2.750 F	3.750	.438 D	4	—	1.875	1.500	2.062	1	3-1-4041X	34592	3-1-4031	1350
											<i>3-1-4031 was replaced by 3-1-4041X</i>		
1.375-10 Spline													
1.375	2.375 F	3.125	.375 D	4	2.500	2.125	1.156	2.125	1		2-1-2091	1310	
1.375	2.750 F	3.750	.375 D	4	3.109	1.938	2.000	2.562	1		3-1-1181 [▲]	1410	
1.375	2.750 F	3.750	.438 D	4	3.000	2.125	2.000	2.438	1		3-1-2011	1350/1410	
1.375	2.750 F	3.750	.438 D	4	3.000	2.125	2.000	2.516	1		3-1-2311	1350/1410	
1.375	2.750 F	3.750	.438 D	4	3.000	1.938	2.062	2.570	1		3-1-2931	1350	
1.375	2.750 F	3.750	.438 D	4	3.000	2.125	2.000	2.438	1		3-1-4001	1350/1410	
1.375	2.750 F	3.750	.438 D	4	—	2.125	1.062	1.656	1		3-1-4141	1350	
1.375	2.750 F	3.750	.438 D	4	3.000	2.125	2.000	2.438	1		3-1-751	1350/1410	

• Part is discontinued ■ Part is available until supply is exhausted ▲ Not sold separately



Spline Hole

D Spline Hole Major Diameter	C Pilot Diameter F-Female M-Male	B Bolt Circle Diameter	Bolt Hole		Brake Drum Pilot Diameter	E Ground Hub Diameter	F Length Thru Hole	G Flange Face to End of Hub	F i g u r e	Companion Flange Assembly (includes slinger when listed)	Slinger Part Number	Companion Flange Part Number	Series
			Diameter D-Drilled T-Tapped	# of Holes									
1.401-32 Involute Spline													
1.401	2.750 M	3.750	.438 D	4	—	2.125	3.656	5.375	2			3-1-4271	1350
<i>.940 deep counterbore at hub end</i>													
1.499-10 Spline													
1.499	2.750 F	3.750	.438 D	4	3.000	2.242	2.000	2.562	1			3-1-811	1350
1.499	2.751 F	3.750	.438 D	4	3.000	2.127	2.000	2.555	1			3-1-2181	1350
1.500-10 Spline													
1.500	2.750 F	3.750	.438 D	4	—	2.250	2.062	2.750	1			3-1-1141	1350
1.500	2.750 F	3.750	.438 D	4	2.875	2.125	2.000	2.562	1			3-1-1151	1350
1.500	2.750 F	3.750	.438 D	4	3.000	2.125	2.000	2.438	1			3-1-2431	1350
1.500	2.750 F	3.750	.438 D	4	3.000	2.250	2.000	2.375	1			3-1-3191	1350/1410
1.500	2.750 F	3.750	.438 D	4	3.112	2.250	2.188	3.062	2			3-1-3341	1410
1.500	2.750 F	3.750	.438 D	4	3.112	2.000	2.188	2.906	1			3-1-3431	1350/1410
<i>.310 deep counterbore at hub end</i>													
1.500	3.125 M	3.969	.438 T	4	—	—	2.000	2.750	2			2-1-2501	1330
<i>Hub diameter not ground</i>													
1.500	3.750 F	4.750	.500 D	4	3.750	2.125	2.000	2.625	1			4-1-2701	1550
1.500	3.750 F	4.750	.500 D	4	3.750	2.250	2.000	2.500	1			4-1-3441	1480/1550
1.500	6.625 F	6.125	.375 D	8	6.875	2.125	2.000	2.375	3			5-1-2421	1610
<i>.250 deep counterbore at hub end</i>													
1.516-35 Involute Spline													
1.516	2.750 F	3.750	.438 D	4	2.875	2.125	2.000	2.562	1			3-1-3651	1350/1410
1.520-23 Involute Spline													
1.520	2.750 F	3.750	.438 D	4	—	2.125	2.047	2.609	1			3-1-3971	1410
1.525-35 Involute Spline													
1.525	3.750 M	4.750	.500 D	4	3.875	2.500	1.938	3.562	2			4-1-4121	1480/1550
1.605-15 Involute Spline													
1.605	3.125 M	3.960	.438 T	4	—	2.125	1.932	3.141	2			2-1-2511•	1310
1.625-10 Spline													
1.625	3.750 F	4.750	.500 D	4	—	2.375	2.125	2.750	1			4-1-2751	1480
1.625	3.750 M	4.750	.500 D	4	—	2.250	2.125	2.688	1			4-1-3571	1480
1.750-10 Spline													
1.750	2.750 F	3.750	.438 D	4	3.109	2.625	2.250	3.125	2			3-1-1521	1410
1.750	2.750 F	3.750	.438 D	4	3.000	2.250	2.188	2.812	1			3-1-3211	1350/1410
1.750	3.750 F	4.750	.500 D	4	3.750	2.250	2.000	2.750	1			4-1-1381	1480
1.750	3.750 F	4.750	.500 D	4	—	2.625	2.250	2.875	1			4-1-3101	1480
1.750	3.750 F	4.750	.500 D	4	3.875	2.375	2.188	2.812	1			4-1-3171	1480
1.750	3.750 F	4.750	.500 D	4	—	2.500	2.250	2.875	1	4-1-3331X•	565W	4-1-3321•	1480
<i>Slinger not sold separately</i>													
1.750	3.750 F	4.750	.500 D	4	3.750	2.500	2.250	3.000	1			4-1-3891	1550
1.750	3.750 F	4.750	.500 D	4	—	2.500	1.938	2.734	1			4-1-5131	1550
1.750	3.750 M	4.750	.500 D	4	—	2.500	1.938	3.562	2			4-1-3721	1480/1550
1.750	3.750 M	4.750	.500 D	4	—	2.500	2.000	3.547	2	4-1-5211X		4-1-7001	1550
<i>Assembly includes four 8-73-226 bolts; 4-1-7001 was replaced by 4-1-5211X</i>													
1.750	5.312 M	6.125	.375 D	8	—	2.500	2.000	3.938	3	5-1-6541X		5-1-6531	1610
<i>Assembly includes eight 6-73-725 bolts; 5-1-6531 was replaced by 5-1-6541X</i>													
1.750	6.625 F	6.125	.375 D	8	—	2.625	2.250	2.875	3			5-1-811	1610
1.750	7.750 F	7.250	.375 D	8	—	2.750	2.250	2.938	3			6-1-1761	1710

• Part is discontinued ■ Part is available until supply is exhausted ▲ Not sold separately



Important: See Safety Information in General Information Section (J300P-GI)

Spline Hole

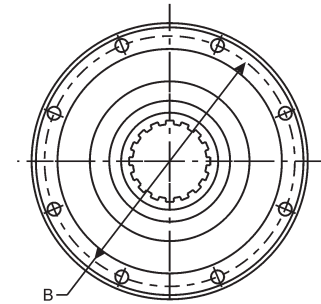
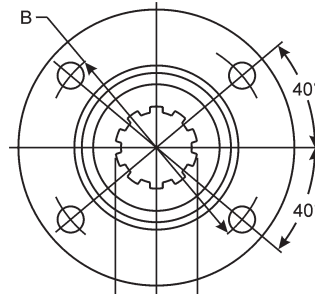
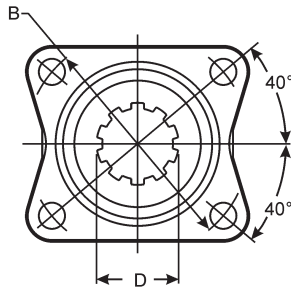
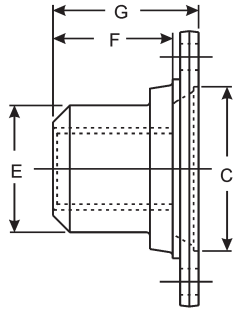


Figure 1

Figure 2

Figure 3

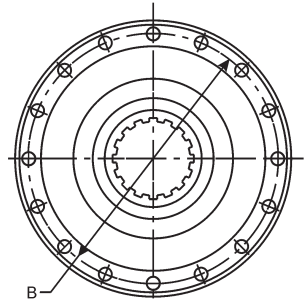
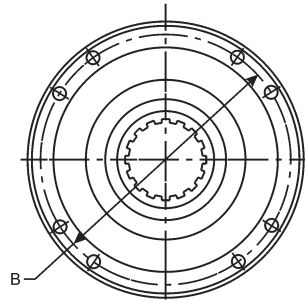
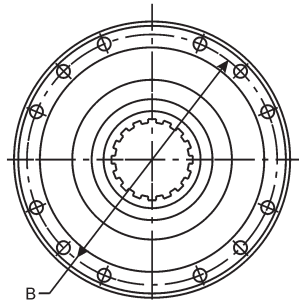


Figure 4

Figure 5

Figure 6

D Spline Hole Major Diameter	C Pilot Diameter F-Female M-Male	B Bolt Circle Diameter	Bolt Hole		E Ground Hub Diameter	F Length Thru Hole	G Flange Face to End of Hub	F i g u r e	Companion Flange Assembly (includes slinger when listed)	Slinger Part Number	Companion Flange Part Number	Series
			Diameter D-Drilled T-Tapped	# of Holes								
1.755-13 Involute Spline												
1.755	6.625 F	6.125	.375 D	8	—	3.062	2.915	3.625	3		5-1-6511	1610
1.790-34 Involute Spline												
1.790	3.750 F	4.750	.500 D	4	—	2.562	2.750	3.344	1	4-1-4501X	4-1-4491 ▲	1480/1550 <i>Assembly includes plug 231059</i>
1.790	3.750 M	4.750	.500 D	4	—	2.562	2.750	3.344	1	4-1-5201X	4-1-4471•	1480/1550 <i>Assembly includes plug 231059 and four 8-73-226 bolts</i>
1.790	3.750 M	4.750	.500 D	4	—	2.562	2.750	3.344	1	4-1-4481X	4-1-4471•	1480/1550 <i>Assembly includes plug 231059 and 4 studs 231016; 4-1-4481X will be replaced by 4-1-5201X when supply is exhausted</i>
1.790	5.312 M	6.125	.375 D	8	—	2.562	2.750	4.250	3	5-1-5151X•	5-1-5141•	1610 <i>Assembly includes plug 231059 and eight 6-73-725 bolts</i>
1.790	5.312 M	6.125	.375 D	8	—	2.562	2.750	3.719	3	90-1-21X	90-1-11	SPL90 <i>Assembly includes plug 231059 and eight 6-73-725 bolts; 90-1-11 was replaced by 90-1-21X</i>
1.790	6.625 F	6.125	.375 D	8	—	2.562	2.781	3.938	3	5-1-5121X	5-1-5111	1610 <i>Assembly includes plug 231059; 5-1-5111 was replaced by 5-1-5121X</i>
1.790	7.750 F	7.250	.375 D	8	—	2.562	2.688	3.903	3	6-1-4701X	6-1-4691	1710 <i>Assembly includes plug 231059; 6-1-4691 was replaced by 6-1-4701X</i>
1.922-14 Involute Spline												
1.922	3.750 F	4.750	.510 D	4	—	2.375	2.183	3.312	2		4-1-5451	1550
1.922	6.625 F	6.125	.385 D	8	—	2.375	2.183	2.840	3		5-1-6891	1610 <i>.120 deep counterbore at hub end</i>
1.960-10 Spline												
1.960	7.750 F	7.250	.375 D	8	—	2.812	3.000	3.625	3		6-1-4641	1710
1.960	3.750 F	4.750	.500 D	4	—	2.750	2.625	3.375	1		4-1-2661■	1480
1.960	7.750 F	7.250	.375 D	8	—	2.750	2.625	3.312	3		6-1-1461	1710

• Part is discontinued ■ Part is available until supply is exhausted ▲ Not sold separately



Spline Hole

D Spline Hole Major Diameter	C Pilot Diameter F-Female M-Male	B Bolt Circle Diameter	Bolt Hole		Brake Drum Pilot Diameter	E Ground Hub Diameter	F Length Thru Hole	G Flange Face to End of Hub	F i g u r e	Companion Flange Assembly (includes slinger when listed)	Slinger Part Number	Companion Flange Part Number	Series
			Diameter D-Drilled T-Tapped	# of Holes									
1.962-10 Spline													
1.962	5.312 M	6.125	.375 D	8	—	2.750	2.797	4.594	3	5-1-6561X		5-1-6551 ▲	1610
												<i>Assembly includes eight 6-73-725 bolts</i>	
1.964-10 Spline													
1.964	3.750 F	4.750	.500 D	4	—	2.500	2.250	3.000	1			4-1-3761 ■	1480
1.964	3.750 M	4.750	.500 D	4	—	2.938	3.031	3.625	1			4-1-4421	1480
1.998-38 Involute Spline													
1.998	3.750 F	4.750	.500 D	4	—	2.750	2.125	2.875	1			4-1-5021	1480/1550
1.998	3.750 M	4.750	.500 D	4	—	2.750	2.062	3.875	1	4-1-6051X		4-1-6041 ▲	1550
												<i>Assembly includes four 8-73-226 studs</i>	
1.998	5.312 M	6.125	.375 D	8	—	2.750	2.125	4.688	3	5-1-6471X		5-1-6271	1610
												<i>Assembly includes eight 6-73-725 bolts; 5-1-6271 was replaced by 5-1-6471X</i>	
1.998	6.436 M	7.250	.375 D	8	—	2.750	2.141	4.703	3	6-1-5851X		6-1-5781	1710
												<i>Assembly includes eight 6-73-725 bolts; 6-1-5781 was replaced by 6-1-5851X</i>	
2.000-10 Spline													
2.000	3.750 F	4.750	.500 D	4	—	2.938	3.000	3.625	1			4-1-2361	1480
2.000	3.750 F	4.750	.500 D	4	3.750	2.750	3.000	3.625	1			4-1-3781	1480
2.000	6.625 F	6.125	.375 D	8	—	2.750	3.000	3.625	3			5-1-3141	1610
2.000	6.625 F	6.125	.375 D	8	—	2.938	3.000	3.625	3			5-1-3161	1610
2.000	6.625 F	6.125	.375 D	8	—	3.250	3.000	3.625	3			5-1-931•	1610
2.000	7.750 F	7.250	.375 D	8	—	2.750	3.000	3.688	3			6-1-2221	1710
2.000	7.750 F	7.250	.375 D	8	—	3.250	3.125	3.812	3			6-1-911	1710
2.032-10 Spline													
2.032	7.750 F	7.250	.438 D	12	—	2.750	2.000	2.688	4			6.5-1-2421	1810
2.114-32 Involute Spline													
2.114	5.312 M	6.125	.385 D	8	—	3.000	2.250	2.844	3	5-1-6731X ■	232200	5-1-6721 ▲	1610
												<i>.424 deep counterbore at hub end</i>	
2.114	6.625 F	6.125	.375 D	8	—	3.000	2.245	2.844	3	5-1-6701X	232200	5-1-6691	1610
												<i>.424 deep counterbore at hub end; 5-1-6691 will be replaced by 5-1-6701X when supply is exhausted</i>	
2.143-41 Involute Spline													
2.143	7.750 F	7.250	.440 D	12	—	2.939	2.495	3.500	4			6.5-1-2941	1810
2.149-16 Spline													
2.149	6.625 F	6.125	.385 D	8	—	2.938	3.000	3.750	3			5-1-2551•	1610
												<i>.230 deep counterbore at hub end</i>	
2.225-6 Spline													
2.225	6.625 F	6.125	.375 D	8	—	3.000	3.250	3.875	3			5-1-2541	1610
2.225	7.750 F	7.250	.375 D	8	—	3.000	3.250	4.469	3			6-1-1481	1710
2.225	7.750 F	7.250	.375 D	8	—	3.000	3.250	3.750	3			6-1-1731	1710
2.225	7.750 F	7.250	.438 D	12	—	3.000	3.250	3.750	4			6.5-1-481	1810
2.250-10 Spline													
2.250	6.625 F	6.125	.375 D	8	—	3.500	3.000	3.625	3			5-1-6331	1610
2.250	7.750 F	7.250	.375 D	8	—	3.000	3.000	3.750	3			6-1-1421	1710
												<i>.250 deep counterbore at hub end</i>	
2.250	7.750 F	7.250	.375 D	8	—	3.500	3.000	3.688	3			6-1-951	1710
2.250	7.750 F	7.250	.378 D	8	—	3.250	3.000	3.620	3			6-1-5741	1710
												<i>.880 deep counterbore at hub end</i>	
2.250	7.750 F	7.250	.438 D	12	—	3.500	3.000	3.688	4			6.5-1-151	1810
2.250	7.750 F	7.250	.438 D	12	—	3.000	3.000	3.750	4			6.5-1-211	1810
												<i>.250 deep counterbore at hub end</i>	

• Part is discontinued ■ Part is available until supply is exhausted ▲ Not sold separately



Important: See Safety Information in General Information Section (J300P-GI)

Spline Hole

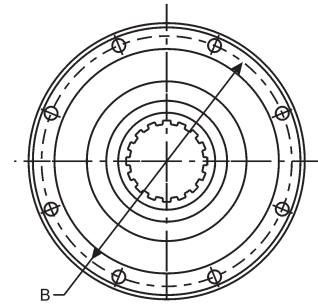
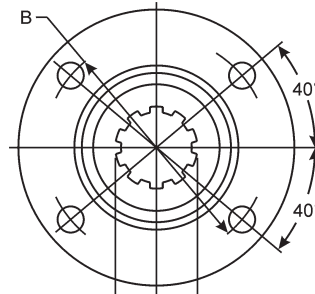
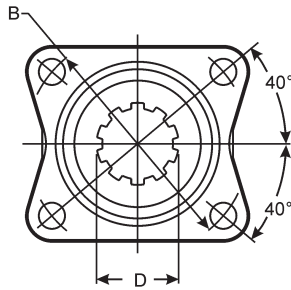
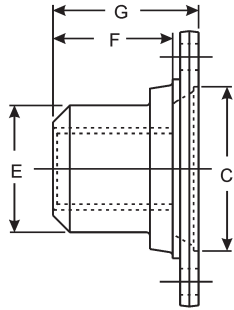


Figure 1

Figure 2

Figure 3

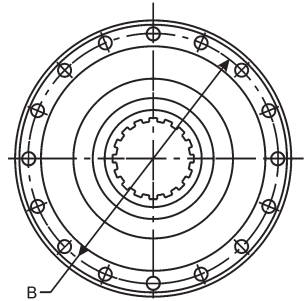
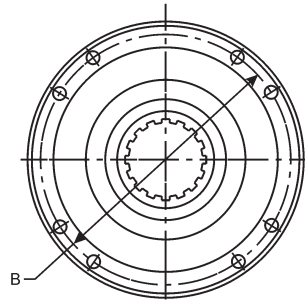
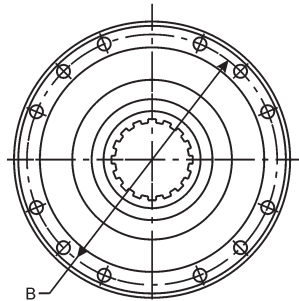


Figure 4

Figure 5

Figure 6

D	C	B	Bolt Hole		Brake Drum Pilot Diameter	E	F	G	F i g u r e	Companion Flange Assembly (includes slinger when listed)	Slinger Part Number	Companion Flange Part Number	Series
			Diameter	# of Holes									
2.274-44 Involute Spline													
2.274	7.750 F	7.250	.438 D	12	—	2.938	2.500	3.094	4	6.5-1-2401X	231022	6.5-1-2391	1810
												<i>6.5-1-2391 was replaced by 6.5-1-2401X</i>	
2.350-16 Spline													
2.350	7.750 F	7.250	.375 D	8	—	3.312	2.750	3.438	3			6-1-5581	1710
												<i>For use on coupling shaft</i>	
2.350	7.750 F	7.250	.438 D	12	—	3.317	2.750	3.438	4			6.5-1-1811	1810
												<i>For use on coupling shaft</i>	
2.351-16 Spline													
2.351	7.750 F	7.250	.375 D	8	—	3.750	2.750	3.000	3			6-1-4571	1710
												<i>Hub machined for speedometer gear and no.3 woodruff keyway</i>	
2.364-18 Involute Spline													
2.364	7.750 F	7.250	.375 D	8	6.656	3.500	3.375	4.031	3			6-1-4541	1710
2.364	7.750 F	7.250	.438 D	12	—	3.500	3.375	4.031	4			6.5-1-1801	1810
2.374-46 Involute Spline													
2.374	7.750 F	7.250	.438 D	12	—	3.750	2.391	3.109	4			6.5-1-2441•	1810
												<i>Hub machined for speedometer gear</i>	
2.390-46 Involute Spline													
2.390	7.750 F	7.250	.375 D	8	—	3.500	3.375	4.547	3			6-1-4671	1710
2.422-18 Involute Spline													
2.422	7.750 F	7.250	.378 D	8	—	3.375	3.000	3.690	3	6-1-5601X	231013	6-1-5591▲	1710
2.447-28 Involute Spline													
2.447	7.750 F	7.250	.378 D	8	—	3.375	2.495	3.570	3			6-1-6161■	1710

• Part is discontinued ■ Part is available until supply is exhausted ▲ Not sold separately



Spline Hole

D Spline Hole Major Diameter	C Pilot Diameter F-Female M-Male	B Bolt Circle Diameter	Bolt Hole		Brake Drum Pilot Diameter	E Ground Hub Diameter	F Length Thru Hole	G Flange Face to End of Hub	F i g u r e	Companion Flange Assembly (includes slinger when listed)	Slinger Part Number	Companion Flange Part Number	Series
			Diameter D-Drilled T-Tapped	# of Holes									
2.500-10 Spline													
2.500	7.750 F	7.250	.375 D	8	—	3.250	3.000	3.688	3			6-1-4481	1710
2.500	7.750 F	7.250	.375 D	8	—	3.750	3.000	3.625	3	6-1-5651X	231616	6-1-5541	1710
<i>6-1-5541 will be replaced by 6-1-5651X when supply is exhausted</i>													
2.500	7.750 F	7.250	.378 D	8	—	3.500	2.405	3.310	3	6-1-6081X	232042-10	6-1-6071 ▲	1710
2.500	7.750 F	7.250	.438 D	12	—	3.750	3.000	3.625	4	6.5-1-2351X	231616	6.5-1-2271	1810
<i>6.5-1-2271 was replaced by 6.5-1-2351X</i>													
2.500	7.750 F	7.250	.440 D	12	—	3.500	2.410	3.310	4			6.5-1-2041	1810
2.503-19 Involute Spline													
2.503	7.000 F	8.250	.625-18 T	8	—	3.500	4.000	5.500	5			8-1-191	1850
2.503	7.750 F	7.250	.438 D	12	6.625	3.500	3.000	3.844	4			6.5-1-1361	1810
<i>.250 deep counterbore at hub end</i>													
2.544-49 Involute Spline													
2.544	7.750 F	7.250	.375 D	8	—	3.818	2.125	3.130	1	131436K	5008437	6-1-6281 ▲	1710
<i>Nut #131095 (incl. in assy) is used only on Spicer Axles. Slinger not sold separately.</i>													
2.544	7.750 F	7.250	.375 D	8	—	3.818	2.125	3.130	1	5008460 ■	5008437	6-1-6281 ▲	1710
2.560-20 Involute Spline													
2.560	7.750 F	7.250	.438 D	12	6.625	3.500	3.344	4.000	4			6.5-1-2161	1810
2.625-25 Involute Spline													
2.625	7.750 F	7.250	.375 D	8	—	3.500	3.016	3.625	3			6-1-5511	1710
2.635-20 Involute Spline													
2.635	6.992 M	8.250	.625 T	8	—	4.004	3.305	4.442	5	8-1-821X	230888	8-1-811 ▲	1850
<i>.560 deep counterbore at hub end; Slinger not sold separately.</i>													
2.750-10 Spline													
2.750	6.625 F	6.125	.375 D	8	—	3.750	3.000	4.060	3	5-1-6611X	231616	5-1-6601 ▲	1610
2.750	7.750 F	7.250	.438 D	12	—	4.000	2.938	3.750	4			6.5-1-1871	1810
<i>Hub machined for speedometer gear</i>													
2.750	7.750 F	7.250	.438 D	12	—	3.750	3.000	4.062	4	6.5-1-2361X	231616	6.5-1-2311 ▲	1810
2.750	7.750 F	7.250	.438 D	12	—	3.500	3.000	4.062	4			6.5-1-741	1810
2.750	8.000 M	7.250	.375 D	8	8.000	3.500	3.000	3.688	3			6-1-2381	1710
<i>Use with thru stop brake disc. mount between flange & yoke</i>													
2.784-21 Involute Spline													
2.784	6.438 M	7.250	.438 D	16	—	3.500	3.000	4.125	6			6-1-5231	1710
<i>Part has 16 equally spaced holes</i>													
3.503-27 Involute Spline													
3.503	6.888 M	11.024	.875 D	8	—	5.003	4.185	5.850	2	315DIN-1-71X	231574	315DIN-1-61 ▲	315 DI
<i>Slinger not sold separately</i>													
3.503	7.000 F	8.250	.625 D	8	—	5.005	4.000	5.188	5	8-1-791X	230922	8-1-751 ▲	1880
<i>Slinger not sold separately</i>													

• Part is discontinued ■ Part is available until supply is exhausted ▲ Not sold separately



Important: See Safety Information in General Information Section (J300P-GI)

Circular Type - Straight Round Hole COMPANION FLANGES

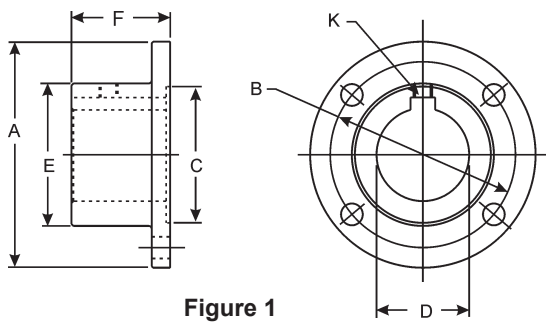


Figure 1

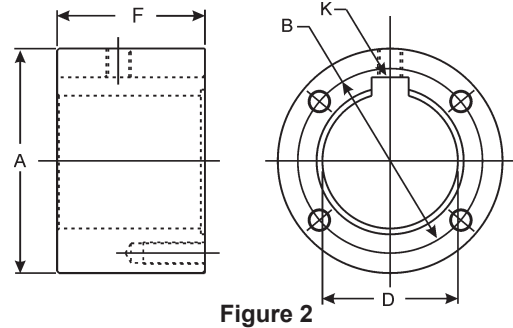


Figure 2

D	K	C	Figure	Bolt Hole Diameter D-Drilled T-Tapped	E	F	Companion Flange Part Number
Bore Diameter	Keyway Width	Pilot Diameter F-Female M-Male			Hub Diameter	Flange Face to End of Hub	
1310 SERIES							
A-3.875 B-3.125 DIA. (4 HOLES)							
.750	—	2.375-F	1	.375 D	2.438	2.000	2-1-1313 <i>Rough bore - without keyway</i>
1.000	.250	2.375-F	1	.375 D	2.438	2.000	2-1-1313-1
1.250	.250	2.375-F	1	.375 D	2.438	2.000	2-1-1313-3
1.250	.312	2.375-F	1	.375 D	2.438	2.000	2-1-1313-4
1.375	.312	2.375-F	1	.375 D	2.438	2.000	2-1-1313-5
1.438	.375	2.375-F	1	.375 D	2.438	2.000	2-1-1313-7
1.500	.375	2.375-F	1	.375 D	2.438	2.000	2-1-1313-8
1.625	.375	2.375-F	1	.375 D	2.438	2.000	2-1-1313-9
1.750	.375	2.375-F	2	.375-24 T	3.875	2.500	2-1-1323-1
1.875	.500	2.375-F	2	.375-24 T	3.875	2.500	2-1-1323-3
1350 SERIES							
A-4.562 B-3.750 DIA. (4 HOLES)							
1.000	—	2.750-F	1	.438 D	2.875	2.000	3-1-1013 <i>Rough bore - without keyway</i>
1.000	—	2.750-F	1	.440 D	2.875	3.440	3-1-303 <i>Rough bore - without keyway</i>
1.000	.250	2.750-F	1	.438 D	2.875	2.000	3-1-1013-1
1.125	.250	2.750-F	1	.438 D	2.875	2.000	3-1-1013-2
1.250	.250	2.750-F	1	.438 D	2.875	2.000	3-1-1013-3
1.250	.312	2.750-F	1	.438 D	2.875	2.000	3-1-1013-4
1.375	.312	2.750-F	1	.438 D	2.875	2.000	3-1-1013-5
1.375	.375	2.750-F	1	.438 D	2.875	2.000	3-1-1013-6
1.438	.375	2.750-F	1	.438 D	2.875	2.000	3-1-1013-7
1.500	.375	2.750-F	1	.438 D	2.875	2.000	3-1-1013-8
1.625	.375	2.750-F	1	.438 D	2.875	2.000	3-1-1013-9
1.750	—	2.750-F	2	.438-20 T	4.562	3.000	3-1-1023- [▲] <i>Rough bore - without keyway</i>
1.750	.375	2.750-F	1	.438 D	2.875	2.000	3-1-1013-10
1.750	.377	2.750-F	1	.440 D	2.875	3.440	3-1-303-7
1.875	.375	2.750-F	1	.438 D	2.875	2.000	3-1-1013-11
1.875	.500	2.750-F	1	.438 D	2.875	2.000	3-1-1013-12
2.000	.500	2.750-F	2	.438-20 T	4.562	3.000	3-1-1023-1
2.125	.500	2.750-F	2	.438-20 T	4.562	3.000	3-1-1023-2
2.250	.500	2.750-F	2	.438-20 T	4.562	3.000	3-1-1023-10- [■]
2.250	.625	2.750-F	2	.438-20 T	4.562	3.000	3-1-1023-3

• Part is discontinued ■ Part is available until supply is exhausted ▲ Not sold separately



COMPANION FLANGES

Circular Type - Straight Round Hole

D	K	C	Figure	Bolt Hole Diameter D-Drilled T-Tapped	E	F	Companion Flange Part Number
Bore Diameter	Keyway Width	Pilot Diameter F-Female M-Male			Hub Diameter	Flange Face to End of Hub	
1480 SERIES							
A-5.875 B-4.750 DIA. (4 HOLES)							
1.250	—	3.750-F	1	.500 D	3.750	2.500	4-1-1133 <i>Rough bore - without keyway</i>
1.500	.375	3.750-F	1	.500 D	3.750	2.500	4-1-1133-1
1.625	.375	3.750-F	1	.500 D	3.750	2.500	4-1-1133-2
1.750	.375	3.750-F	1	.500 D	3.750	2.500	4-1-1133-3
1.875	.500	3.750-F	1	.500 D	3.750	2.500	4-1-1133-5
2.000	.500	3.750-F	1	.500 D	3.750	2.500	4-1-1133-6
2.250	.500	3.750-F	1	.500 D	3.750	2.500	4-1-1133-13
2.250	.625	3.750-F	1	.500 D	3.750	2.500	4-1-1133-8
2.375	—	3.750-F	2	.500-20 T	5.875	3.000	4-1-1143 <i>Rough bore - without keyway</i>
2.375	.625	3.750-F	1	.500 D	3.750	2.500	4-1-1133-9■
2.500	.625	3.750-F	2	.500-20 T	5.875	3.000	4-1-1143-1
2.938	.750	3.750-F	2	.500-20 T	5.875	3.000	4-1-1143-3■

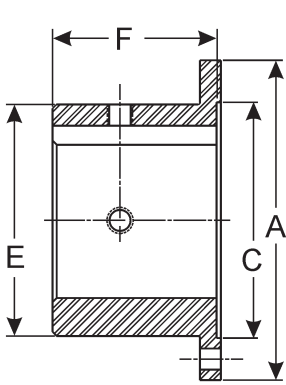
• Part is discontinued ■ Part is available until supply is exhausted ▲ Not sold separately



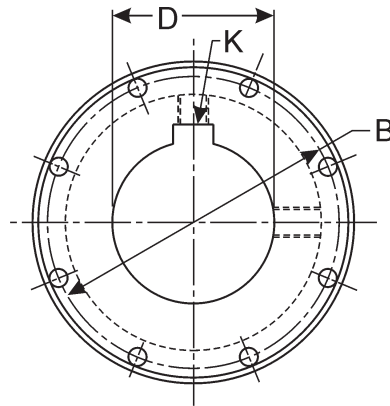
Important: See Safety Information in General Information Section (J300P-GI)

COMPANION FLANGES

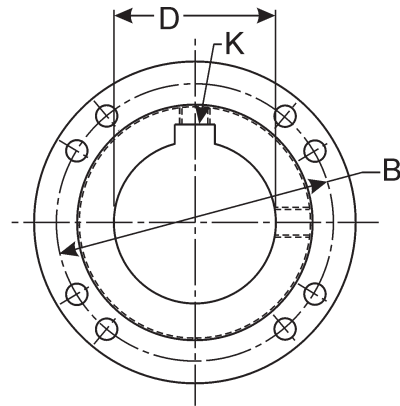
Circular Type - Straight Round Hole



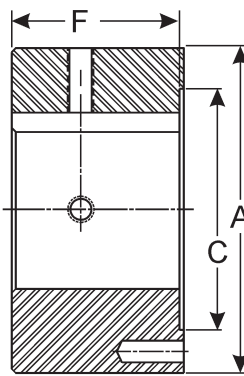
Side View of Styles 1, 2 & 3



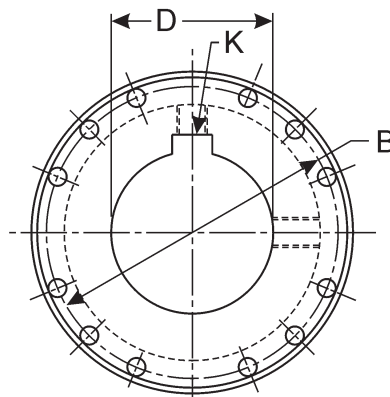
Style 1



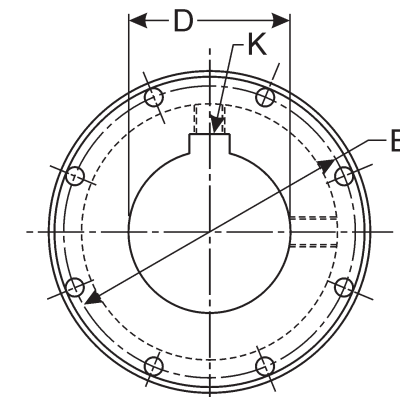
Style 2



Side View of Style 4



Style 3



Style 4

D Bore Diameter	K Keyway Width	C Pilot Diameter F-Female M-Male	Figure	Bolt Hole Diameter D-Drilled T-Tapped	E	F	Companion Flange Part Number
					Hub Diameter	Flange Face to End of Hub	
1610 SERIES							
A-6.875 B-6.125 DIA. (8 HOLES)							
1.250	—	6.625-F	1	.375 D	5.250	3.500	5-1-873 <i>Rough bore - without keyway</i>
2.000	.500	6.625-F	1	.375 D	5.250	3.500	5-1-873-1
2.250	.625	6.625-F	1	.375 D	5.250	3.500	5-1-873-3
2.750	.625	6.625-F	1	.375 D	5.250	3.500	5-1-873-7
3.000	.750	6.625-F	1	.375 D	5.250	3.500	5-1-873-9
3.125	—	6.625-F	4	.375-24 T	6.875	5.000	5-1-883 <i>Rough bore - without keyway</i>
3.500	.875	6.625-F	4	.375-24 T	6.875	5.000	5-1-883-1
1710 SERIES							
A-8.000 B-7.250 DIA. (8 HOLES)							
1.250	—	7.750-F	1	.375 D	6.375	4.000	6-1-1253 <i>Rough bore - without keyway</i>
2.438	.625	7.750-F	1	.375 D	6.375	4.000	6-1-1253-1
2.750	.625	7.750-F	1	.375 D	6.375	4.000	6-1-1253-3
2.938	.750	7.750-F	1	.375 D	6.375	4.000	6-1-1253-4
3.500	.875	7.750-F	1	.375 D	6.375	4.000	6-1-1253-6

• Part is discontinued ■ Part is available until supply is exhausted ▲ Not sold separately



COMPANION FLANGES

Circular Type - Straight Round Hole

D	K	C	Figure	Bolt Hole Diameter D-Drilled T-Tapped	E	F	Companion Flange Part Number
Bore Diameter	Keyway Width	Pilot Diameter F-Female M-Male			Hub Diameter	Flange Face to End of Hub	
1810 SERIES		A-8.000	B-7.250 DIA.	(12 HOLES)			
1.250	—	7.750-F	3	.438 D	6.375	4.000	6.5-1-533 <i>Rough bore - without keyway</i>
2.438	.625	7.750-F	3	.438 D	6.375	4.000	6.5-1-533-1■
2.500	.625	7.750-F	3	.438 D	6.375	4.000	6.5-1-533-2
2.938	.750	7.750-F	3	.438 D	6.375	4.000	6.5-1-533-4
3.500	.875	7.750-F	3	.438 D	6.375	4.000	6.5-1-533-6
1880 SERIES		A-9.500	B-8.250 DIA.	(8 HOLES)			
1.500	—	7.000-F	2	.625 D	6.875	5.000	9-1-333 <i>Rough bore - without keyway</i>
2.938	.750	7.000-F	2	.625 D	6.875	5.000	9-1-333-2
3.500	.875	7.000-F	2	.628 D	6.875	5.000	9-1-333-4• <i>Has two threaded set screw holes</i>

• Part is discontinued ■ Part is available until supply is exhausted ▲ Not sold separately

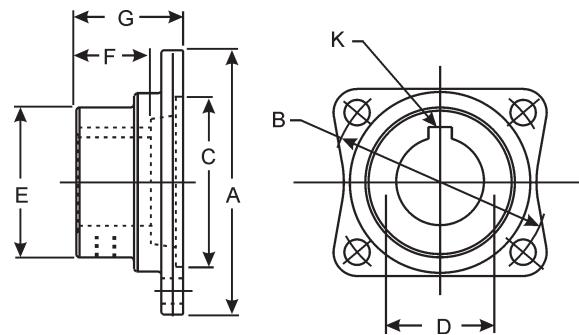


Important: See Safety Information in General Information Section (J300P-GI)

COMPANION FLANGES

J300P-1

Rectangular Type—Straight Round Hole



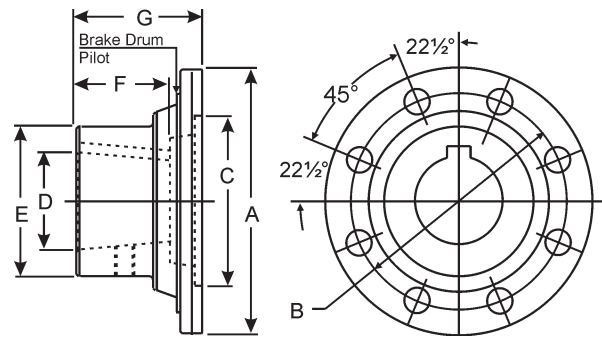
D Bore Diameter	K Keyway Width	C Pilot Diameter F-Female M-Male	Set Screw Hole Viewed from Hub End & Keyway at 12		E Hub Diameter	F Length Thru Hole	G Flange Face to End of Hub	Companion Flange Part Number
			Hole Diameter	At				
1100 SERIES A-3.500 B-2.750 DIA. (4 HOLES)								
.875	.188	2.250 F	.375	6	1.875	1.500	2.125	1-1-253
.875	.250	2.250 F	.375	6	1.875	1.500	2.125	1-1-293
1.000	.250	2.250 F	.375	6	1.875	1.500	2.125	1-1-143
1.125	.250	2.250 F	.375	6&9	1.875	1.500	2.125	1-1-153
1.125	.312	2.250 F	.375	6	1.875	1.500	2.125	1-1-123
1.250	.312	2.250 F	.375	6	1.875	1.500	2.125	1-1-273
1.250	.312	2.250 F	.375	3	1.875	1.500	2.125	1-1-653
1.375	.312	2.250 F	.375	6	2.125	1.500	2.125	1-1-473
1310 SERIES A-3.875 B-3.125 DIA. (4 HOLES)								
.875	.188	2.375 F	.375	6	1.875	1.500	2.062	2-1-623
1.000	.250	2.375 F	.375	6	1.875	1.500	2.062	2-1-283
1.125	.250	2.375 F	.375	6&9	1.875	1.500	2.062	2-1-293
1.125	.312	2.375 F	.375	6	1.875	1.500	2.062	2-1-303
1.250	.250	2.375 F	.375	6	1.875	1.500	2.062	2-1-323
1.250	.312	2.375 F	.375	6	1.875	1.500	2.062	2-1-333
1.375	.312	2.375 F	.375	6	2.120	1.500	2.062	2-1-903
1.500	.375	2.375 F	.375	6	2.438	2.000	2.625	2-1-933
<i>Hub diameter not ground</i>								
1350 SERIES A-4.562 B-3.750 DIA. (4 HOLES)								
1.250	.312	2.750 F	.375	6	2.250	2.000	2.562	3-1-163
1.500	.375	2.750 F	—	—	2.250	2.000	2.562	3-1-333
1.750	.375	2.750 F	.375	12	2.812	—	3.438	3-1-463
<i>3-1-463 was replaced by 3-1-303-7</i>								
1480 SERIES A-5.875 B-4.750 DIA. (4 HOLES)								
2.000	.375	3.750 F	—	—	3.000	2.750	3.590	4-1-1123
<i>Hub diameter not ground</i>								
1550 SERIES A-5.750 B-4.750 DIA. (4 HOLES)								
1.250	—	3.750 F	—	—	3.000	3.062	3.625	4-1-543

• Part is discontinued ■ Part is available until supply is exhausted ▲ Not sold separately



COMPANION FLANGES

Circular Type—Taper Hole



C	D - Taper Hole		E	F	G	Brake Drum Pilot Diameter	Companion Flange Part Number
Pilot Diameter M-Male F-Female	Bore Diameter	Width of Keyway	Ground Hub Diameter	Length Thru Hole	Flange Face to End of Hub		
1610 SERIES		A-Circular 6.875		B-6.125 DIA.		(8 HOLES .325 DIA)	
1.750 SAE Taper							
6.6250-F	1.750	.4375	2.7500	2.2500	2.9375	—	5-1-1154
2.000 SAE Taper							
6.6250-F	2.000	.5000	3.2500	3.0000	3.6250	—	5-1-1924
1650/1710 SERIES		A-Circular 8.000		B-7.250 DIA.		(8 HOLES .325 DIA)	
2.000 SAE Taper							
7.7500-F	2.000	.5000	3.2500	3.0000	3.6875	—	6-1-1144

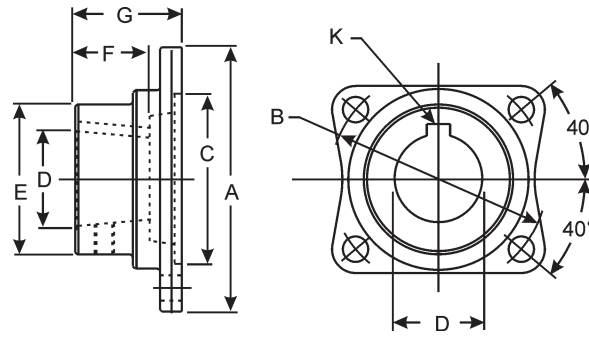
• Part is discontinued ■ Part is available until supply is exhausted ▲ Not sold separately



Important: See Safety Information in General Information Section (J300P-GI)

COMPANION FLANGE

Rectangular Type—Taper Hole



C Pilot Diameter M-Male F-Female	D - Taper Hole		E Ground Hub Diameter	F Length Thru Hole	G Flange Face to End of Hub	Brake Drum Pilot Diameter	Companion Flange Part Number
	Bore Diameter	Width of Keyway					
1310 SERIES	A-Rect. 3.875		B-3.125 DIA.		(4 HOLES .375 DIA)		
1.375 SAE Taper 2.3750-F	1.3750	.3750	2.2500	2.0000	2.6250	—	2-1-634
1.500 SAE Taper 2.3750-F	1.5000	.3750	2.3750	2.0000	2.6250	—	2-1-684
1350/1410 SERIES	A-Rect. 4.625		B-3.750 DIA.		(4 HOLES .438 DIA)		
1.250 SAE Taper 2.7500-F	1.2500	.3125	2.1250	1.5000	2.4375	3.000	3-1-604
1.375 SAE Taper 2.7500-F	1.3750	.3750	2.2500	2.0000	2.6250	—	3-1-584

• Part is discontinued ■ Part is available until supply is exhausted ▲ Not sold separately



1-1-123	14	3-1-1013-6	10	4-1-2661	6	5-1-6551	7
1-1-143	14	3-1-1013-7	10	4-1-2701	5	5-1-6601	9
1-1-153	14	3-1-1013-8	10	4-1-2751	5	5-1-6691	7
1-1-253	14	3-1-1013-9	10	4-1-3101	5	5-1-6721	7
1-1-273	14	3-1-1013-10	10	4-1-3171	5	5-1-6891	6
1-1-293	14	3-1-1013-11	10	4-1-3321	5	5-1-5121X	6
1-1-473	14	3-1-1013-12	10	4-1-3441	5	5-1-5151X	6
1-1-653	14	3-1-1023	10	4-1-3571	5	5-1-6471X	7
2-1-283	14	3-1-1023-1	10	4-1-3721	5	5-1-6541X	5
2-1-293	14	3-1-1023-2	10	4-1-3761	7	5-1-6561X	7
2-1-303	14	3-1-1023-3	10	4-1-3781	7	5-1-6611X	9
2-1-323	14	3-1-1023-10	10	4-1-3891	5	5-1-6701X	7
2-1-333	14	3-1-1141	5	4-1-4121	5	5-1-6731X	7
2-1-623	14	3-1-1151	5	4-1-4421	7	6-1-911	7
2-1-634	15	3-1-1181	4	4-1-4471	6	6-1-951	7
2-1-684	15	3-1-1521	5	4-1-4471	6	6-1-1144	16
2-1-903	14	3-1-2011	4	4-1-4491	6	6-1-1253	12
2-1-933	14	3-1-2181	5	4-1-5021	7	6-1-1253-1	12
2-1-1313	10	3-1-2311	4	4-1-5131	5	6-1-1253-3	12
2-1-1313-1	10	3-1-2431	5	4-1-5451	6	6-1-1253-4	12
2-1-1313-3	10	3-1-2931	4	4-1-6041	7	6-1-1253-6	12
2-1-1313-4	10	3-1-3191	5	4-1-7001	5	6-1-1421	7
2-1-1313-5	10	3-1-3211	5	4-1-3331X	5	6-1-1461	6
2-1-1313-7	10	3-1-3341	5	4-1-4481X	6	6-1-1481	7
2-1-1313-8	10	3-1-3431	5	4-1-4501X	6	6-1-1731	7
2-1-1313-9	10	3-1-3651	5	4-1-5201X	6	6-1-1761	5
2-1-1323-1	10	3-1-3851	4	4-1-5211X	5	6-1-2221	7
2-1-1323-3	10	3-1-3971	5	4-1-6051X	7	6-1-2381	9
2-1-1641	4	3-1-4001	4	5-1-811	5	6-1-4481	9
2-1-1871	4	3-1-4031	4	5-1-873	12	6-1-4541	8
2-1-2091	4	3-1-4141	4	5-1-873-1	12	6-1-4571	8
2-1-2341	4	3-1-4271	5	5-1-873-3	12	6-1-4641	6
2-1-2501	5	3-1-4371	4	5-1-873-7	12	6-1-4671	8
2-1-2511	5	3-1-4041X	4	5-1-873-9	12	6-1-4691	6
2-1-1881X	4	4-1-543	14	5-1-883	12	6-1-5231	9
3-1-163	14	4-1-1123	14	5-1-883-1	12	6-1-5511	9
3-1-303	10	4-1-1133	11	5-1-931	7	6-1-5541	9
3-1-303-7	10	4-1-1133-1	11	5-1-1154	16	6-1-5581	8
3-1-333	14	4-1-1133-2	11	5-1-1924	16	6-1-5591	8
3-1-463	14	4-1-1133-3	11	5-1-2421	5	6-1-5741	7
3-1-584	15	4-1-1133-5	11	5-1-2541	7	6-1-5781	7
3-1-604	15	4-1-1133-6	11	5-1-2551	7	6-1-6071	9
3-1-751	4	4-1-1133-8	11	5-1-3141	7	6-1-6161	8
3-1-811	5	4-1-1133-9	11	5-1-3161	7	6-1-6281	9
3-1-1013	10	4-1-1133-13	11	5-1-5111	6	6-1-6281	9
3-1-1013-1	10	4-1-1143	11	5-1-5141	6	6-1-4701X	6
3-1-1013-2	10	4-1-1143-1	11	5-1-6271	7	6-1-5601X	8
3-1-1013-3	10	4-1-1143-3	11	5-1-6331	7	6-1-5651X	9
3-1-1013-4	10	4-1-1381	5	5-1-6511	6	6-1-5851X	7
3-1-1013-5	10	4-1-2361	7	5-1-6531	5	6-1-6081X	9



6.5-1-151	7
6.5-1-211	7
6.5-1-481	7
6.5-1-533	13
6.5-1-533-1	13
6.5-1-533-2	13
6.5-1-533-4	13
6.5-1-533-6	13
6.5-1-741	9
6.5-1-1361	9
6.5-1-1801	8
6.5-1-1811	8
6.5-1-1871	9
6.5-1-2041	9
6.5-1-2161	9
6.5-1-2271	9
6.5-1-2311	9
6.5-1-2391	8
6.5-1-2421	7
6.5-1-2441	8
6.5-1-2941	7
6.5-1-2351X	9
6.5-1-2361X	9
6.5-1-2401X	8
8-1-191	9
8-1-751	9
8-1-811	9
8-1-791X	9
8-1-821X	9
9-1-333	13
9-1-333-2	13
9-1-333-4	13
90-1-11	6
90-1-21X	6
5008460	9
131436K	9
315DIN-1-61	9
315DIN-1-71X	9





Dana Corporation
Heavy Vehicle Technologies and
Systems Service
PO Box 321
Toledo, Ohio 43697-0321
1-800-SAY-DANA (729-3262)
www.spicerparts.com

Dana Corporation
Heavy Vehicle Technologies and
Systems Service - Canada
5095 South Service Road
Beamsville, Ontario LOR 1B0
Tech Service: (905) 563-4991

Dana Corporation
Heavy Vehicle Technologies and
Systems Service - International
(419) 861-6325

