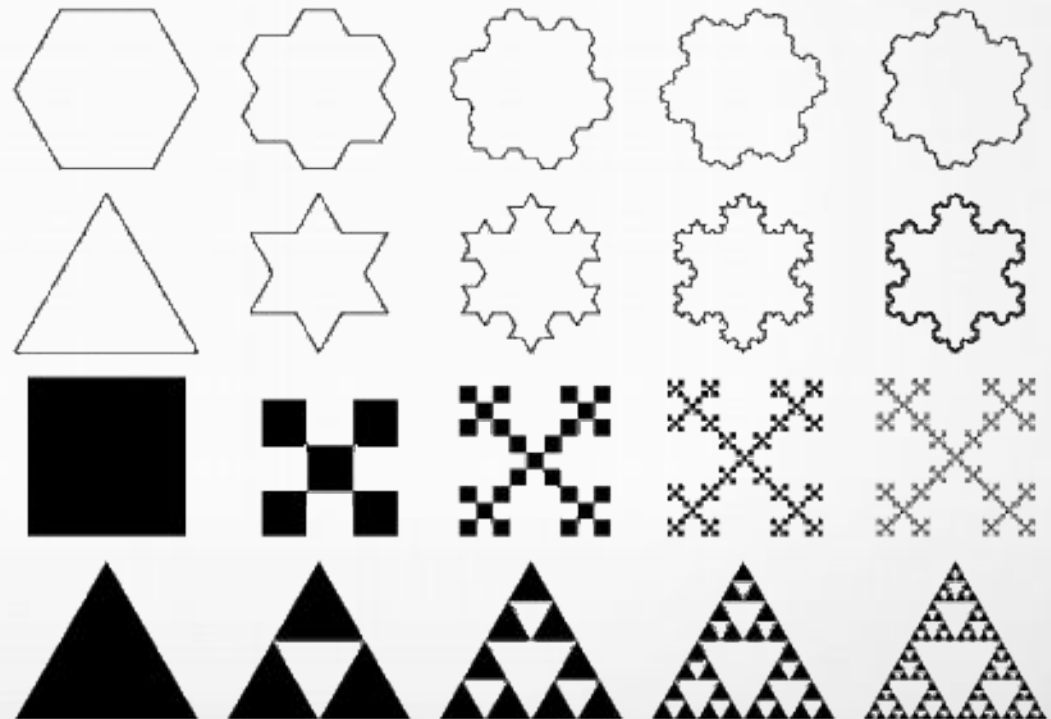
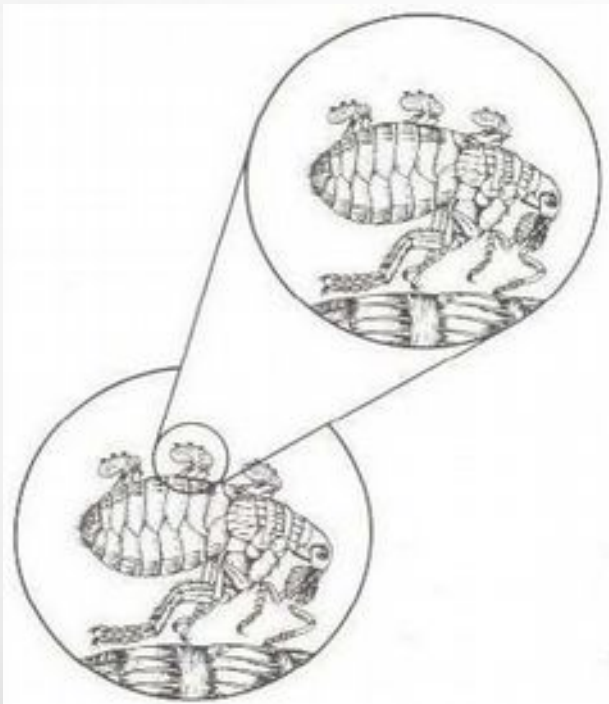


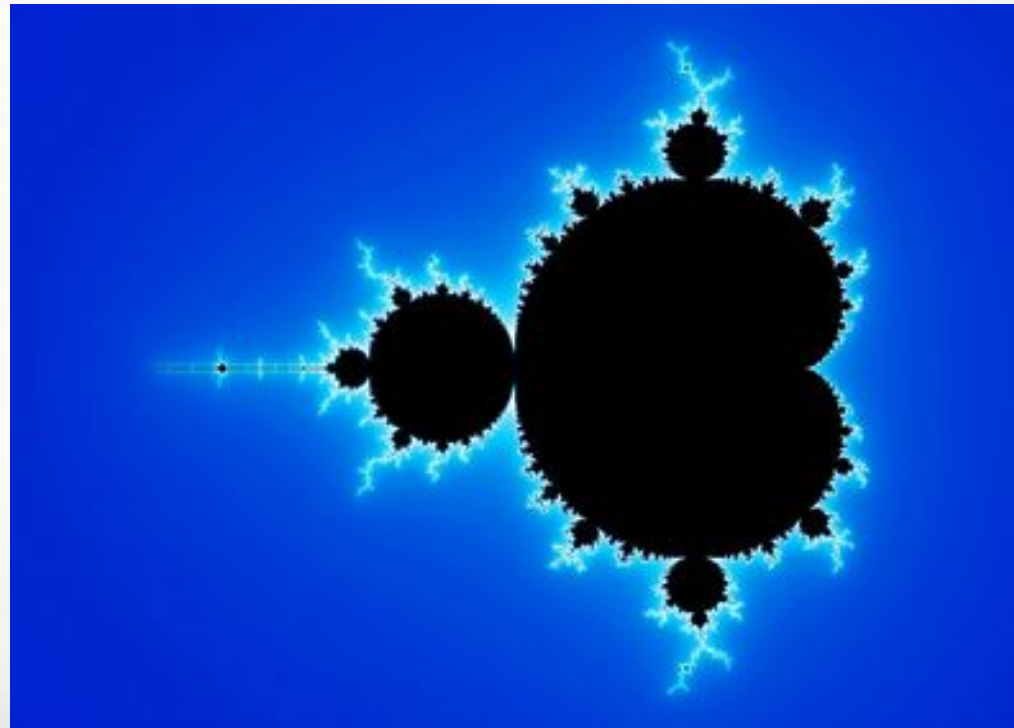
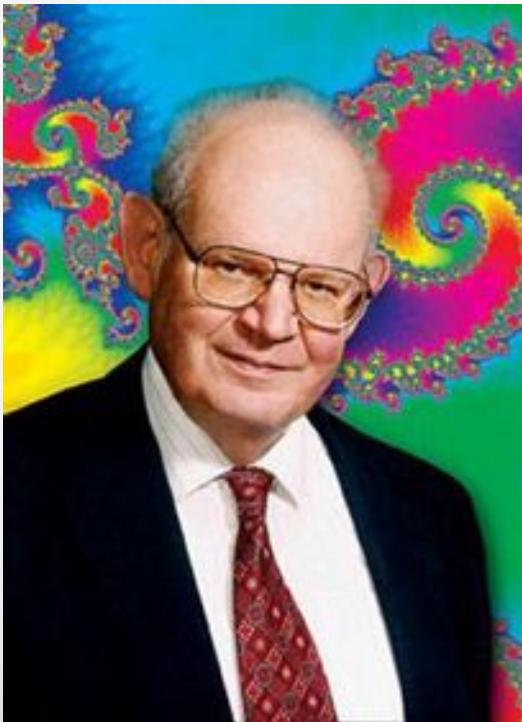
Frattali

- Un frattale è un oggetto che mostra una **invarianza di scala**, ovvero ha la stessa struttura a tutte le scale.



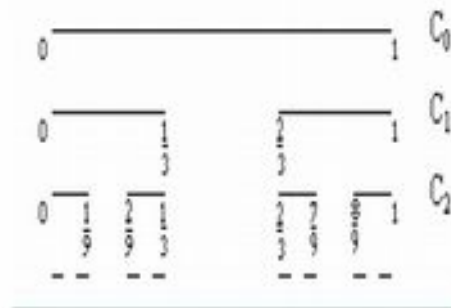
Frattali

- Il termine frattale fu coniato da Benoît Mandelbrot e ha origine nel termine latino fractus, poichè la dimensione di un frattale non è intera.



Frattali

- Dimensione frattale della Polvere di Cantor



N	ϵ	Iterazione
1	1	0
2	$1/3$	1
2^2	$(1/3)^2$	2
2^n	$(1/3)^n$	n

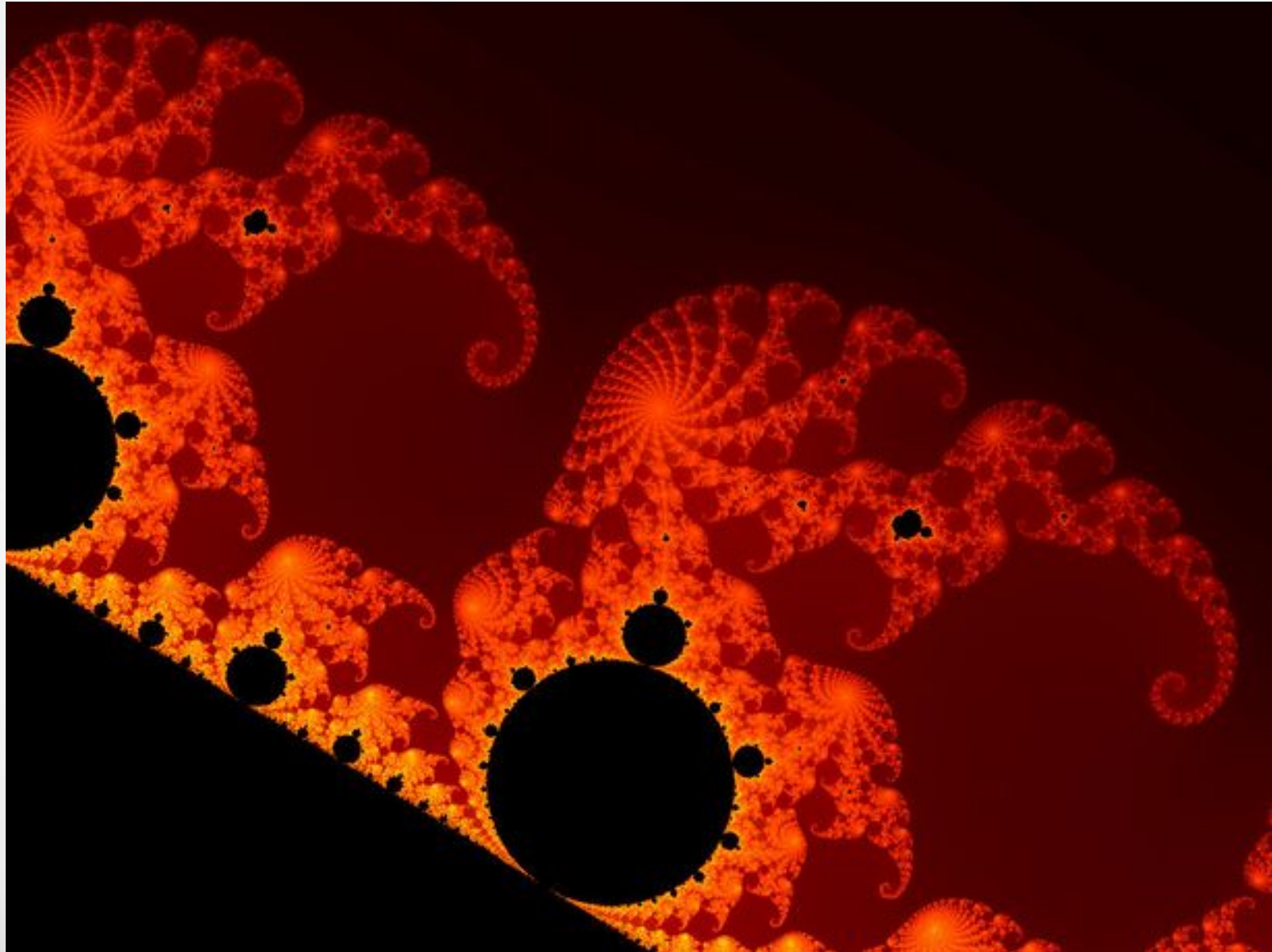
$$D_F = \lim_{\epsilon \rightarrow 0} \frac{\ln(2)^n}{\ln(3)^n} = 0.63..$$

- Dimensione frattale della Curva di Kock

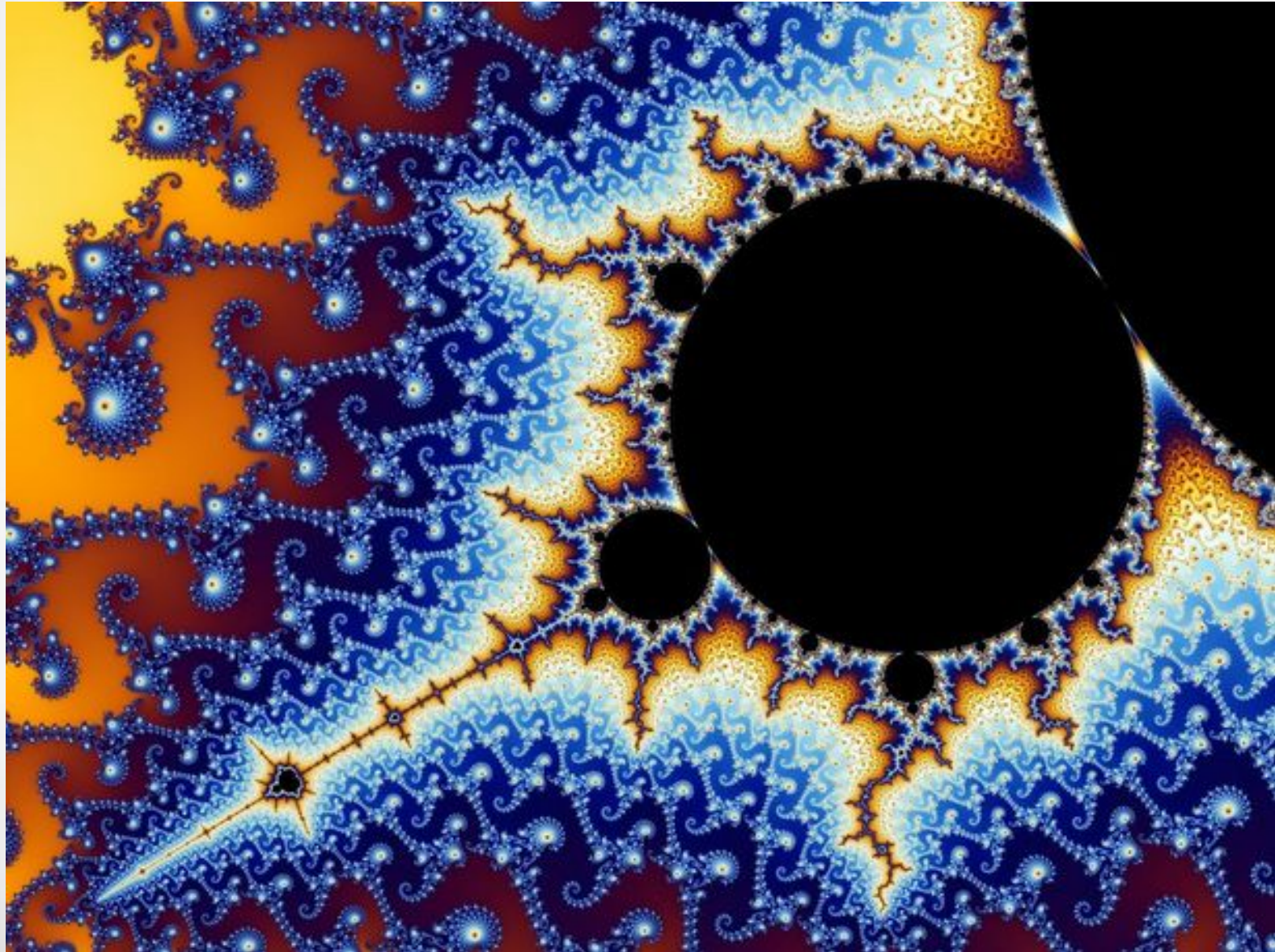


$$D_F = \lim_{\epsilon \rightarrow 0} \frac{\ln 4}{\ln 3} = 1.26..$$

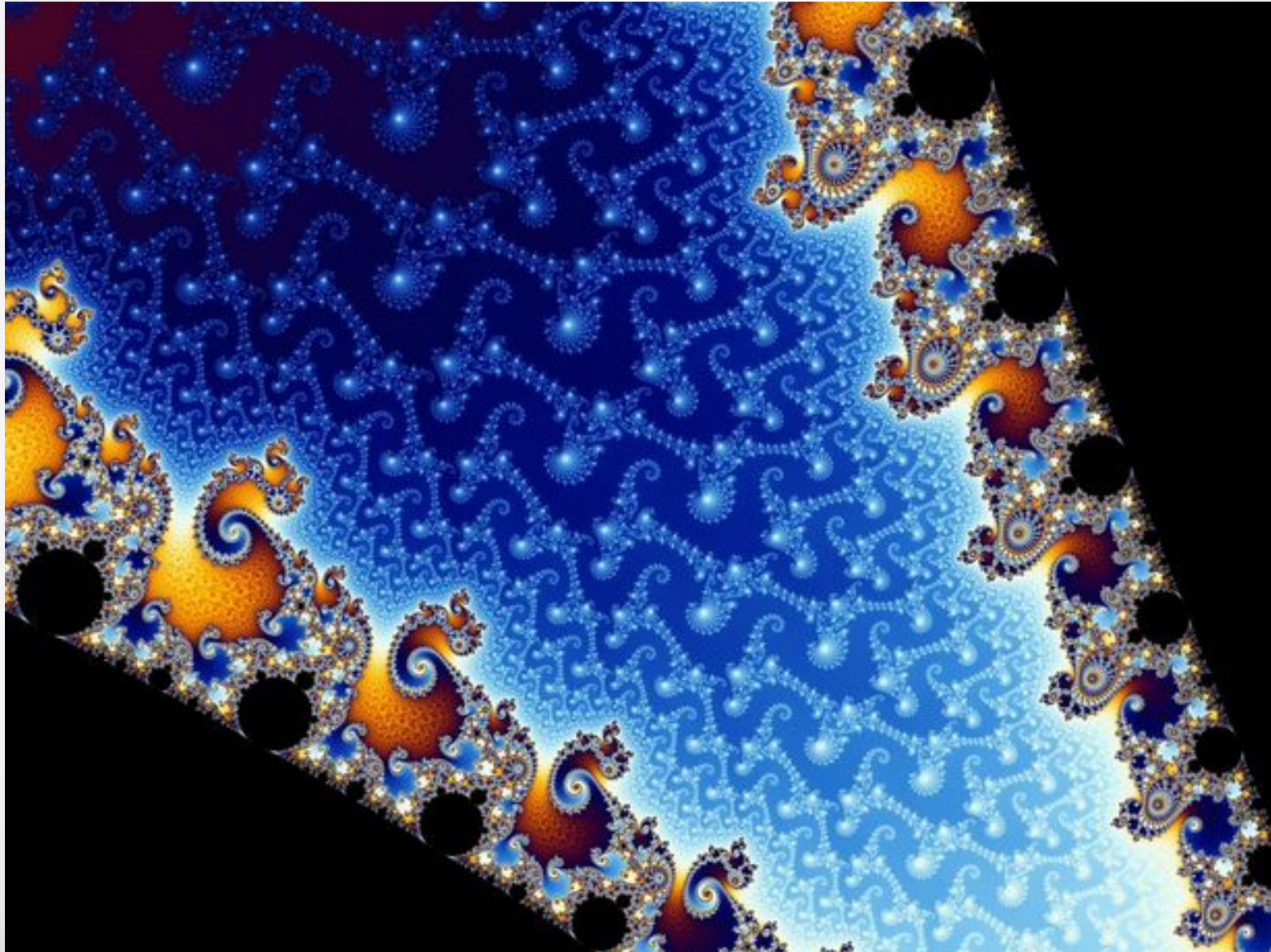
Frattali



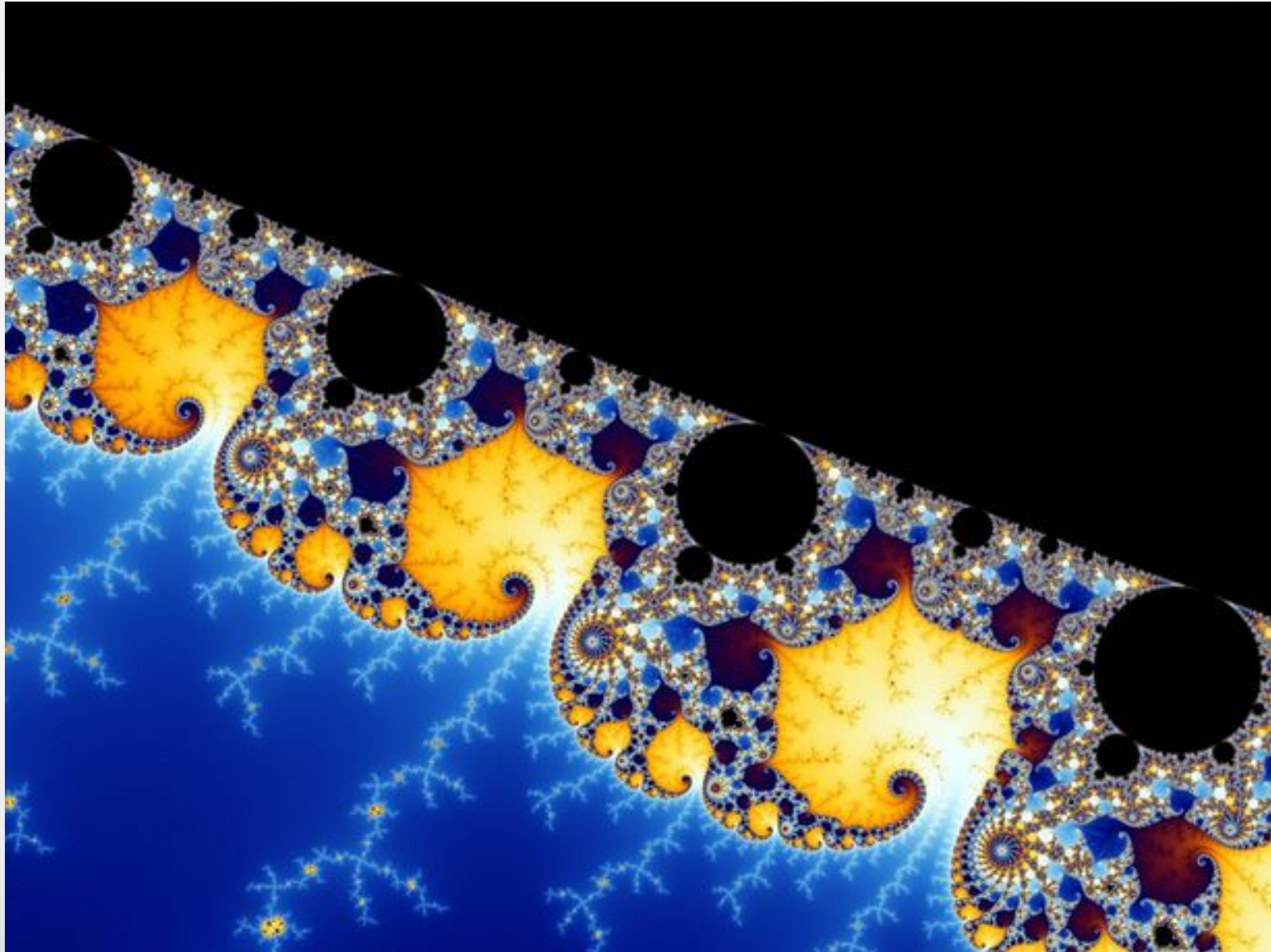
Frattali



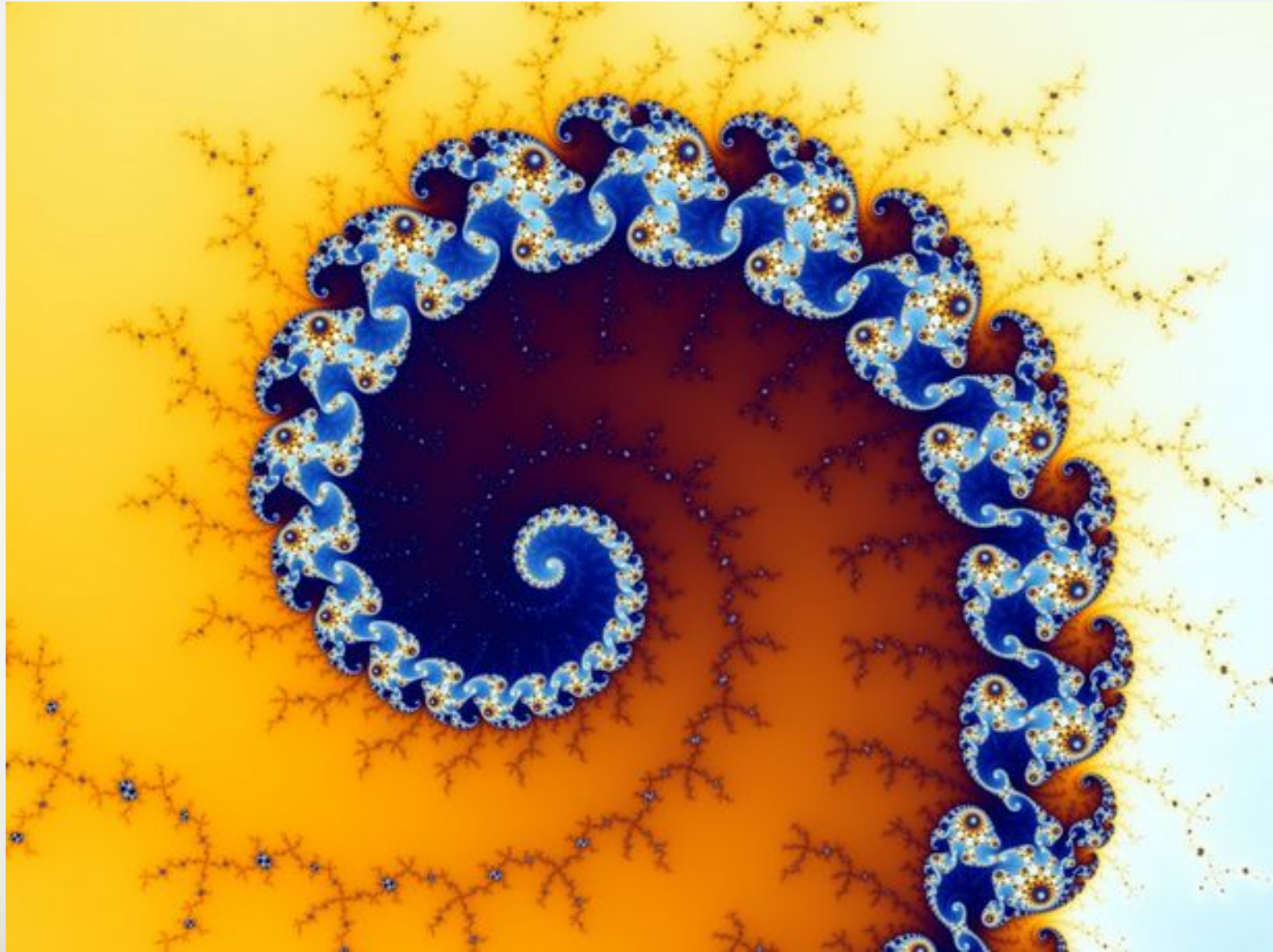
Frattali



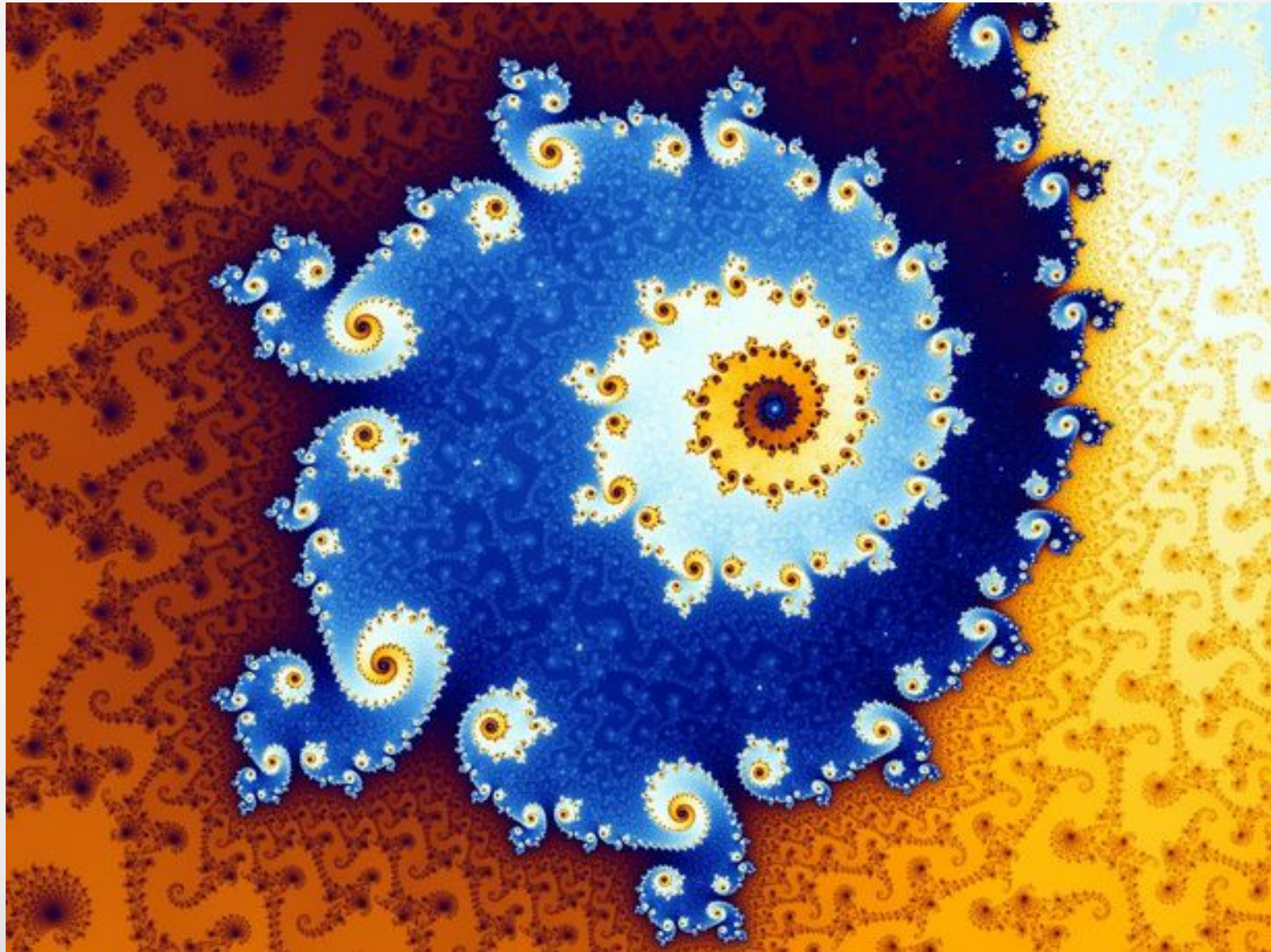
Frattali



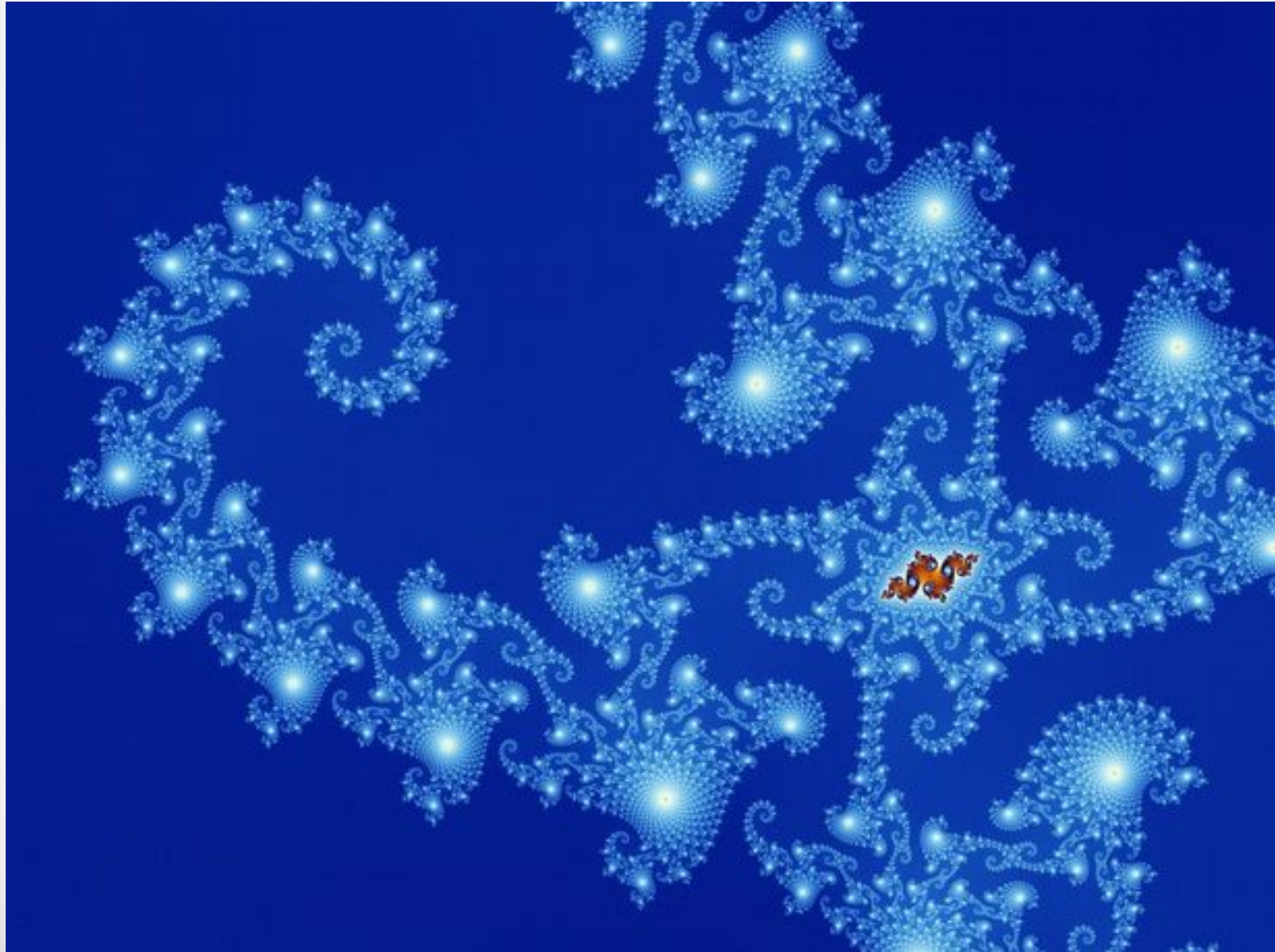
Frattali



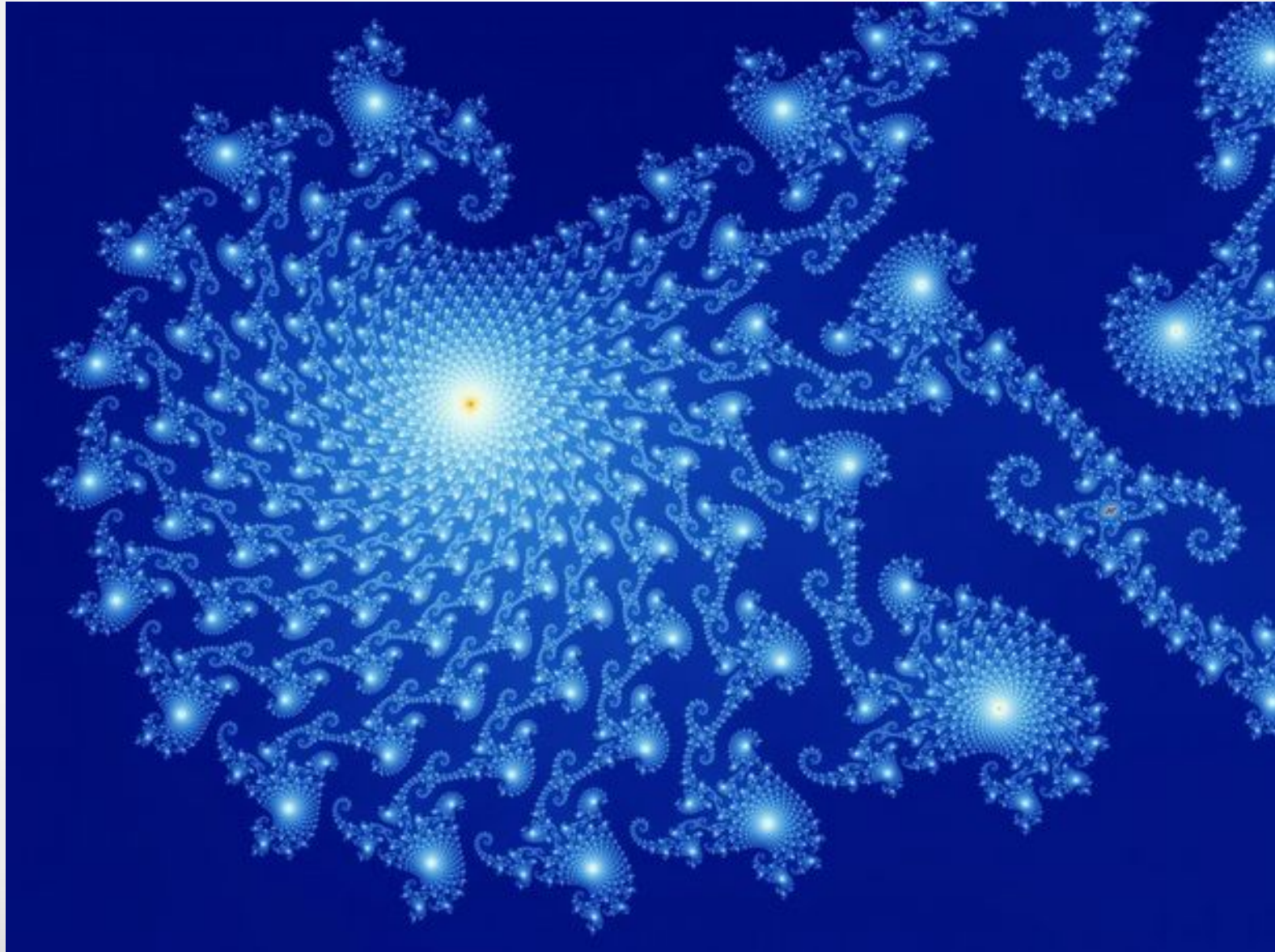
Frattali



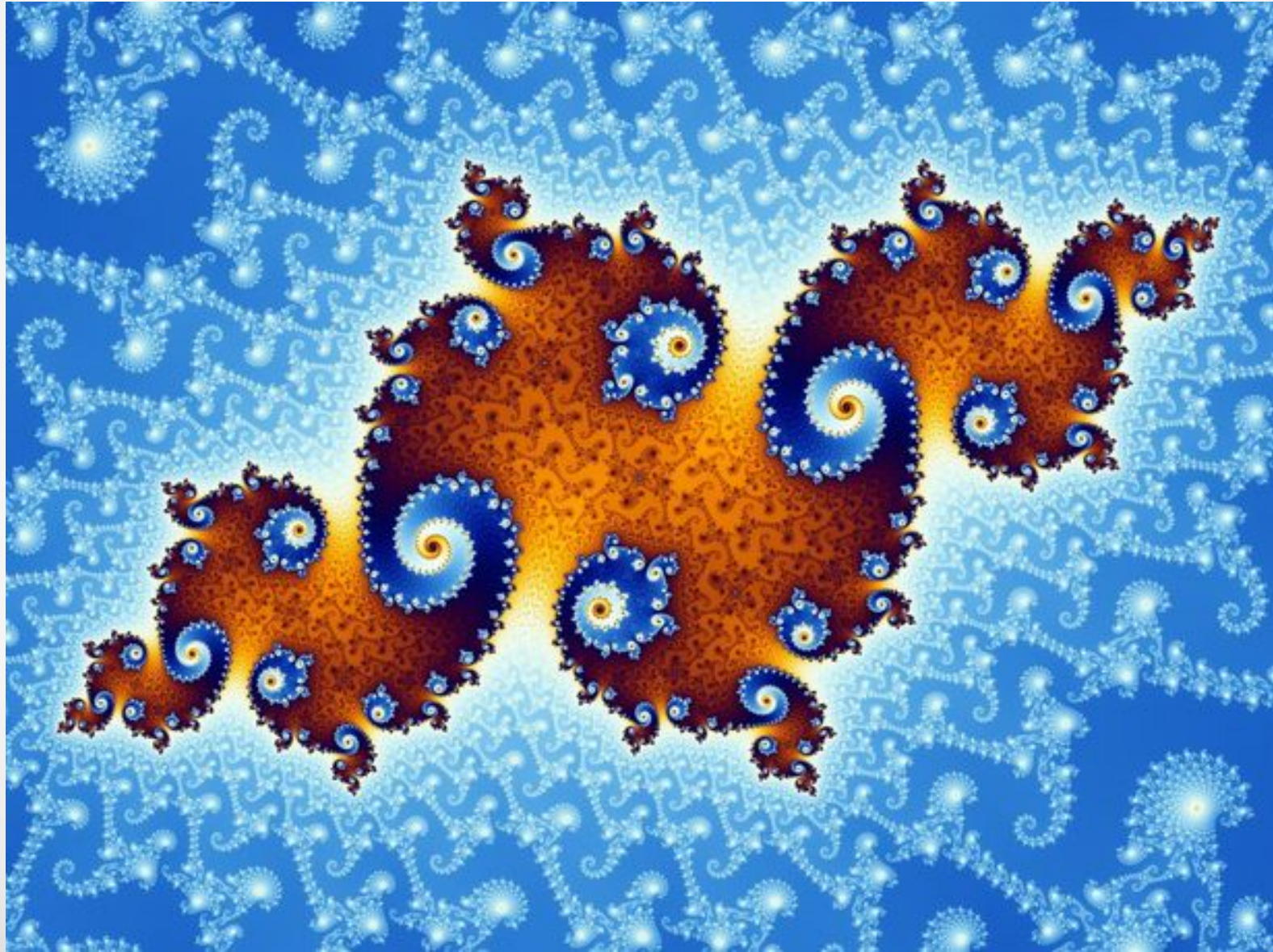
Frattali



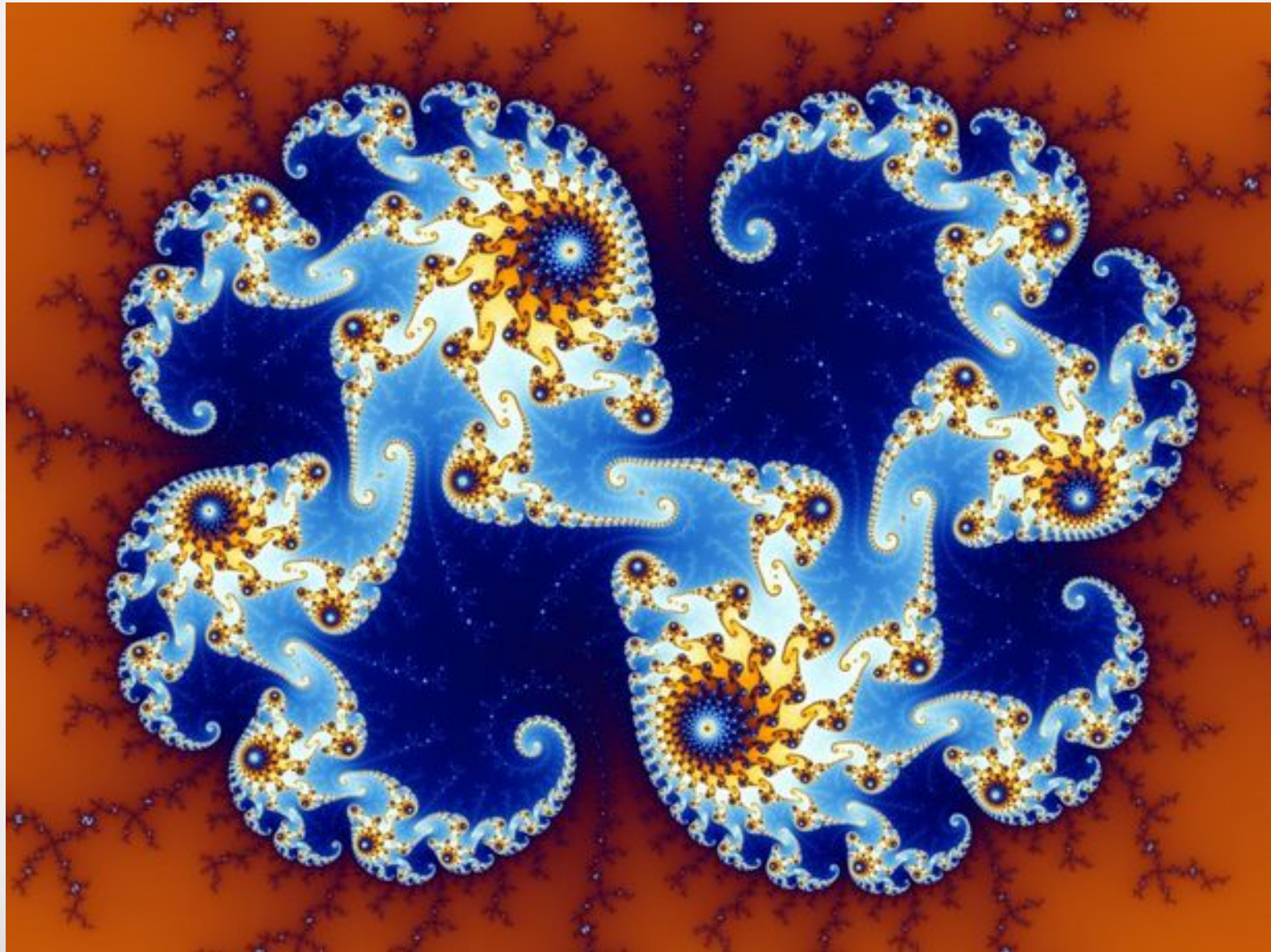
Frattali



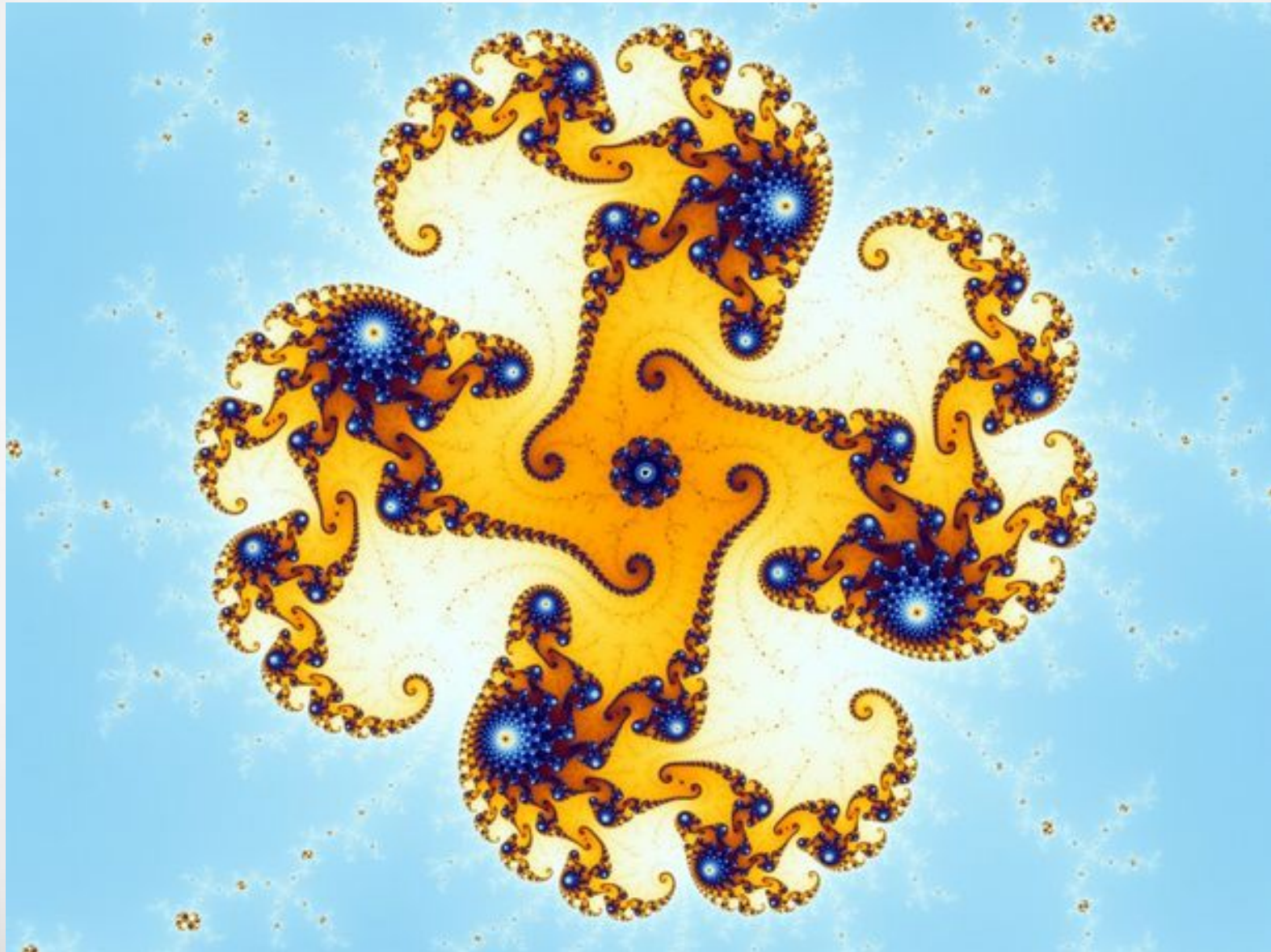
Frattali



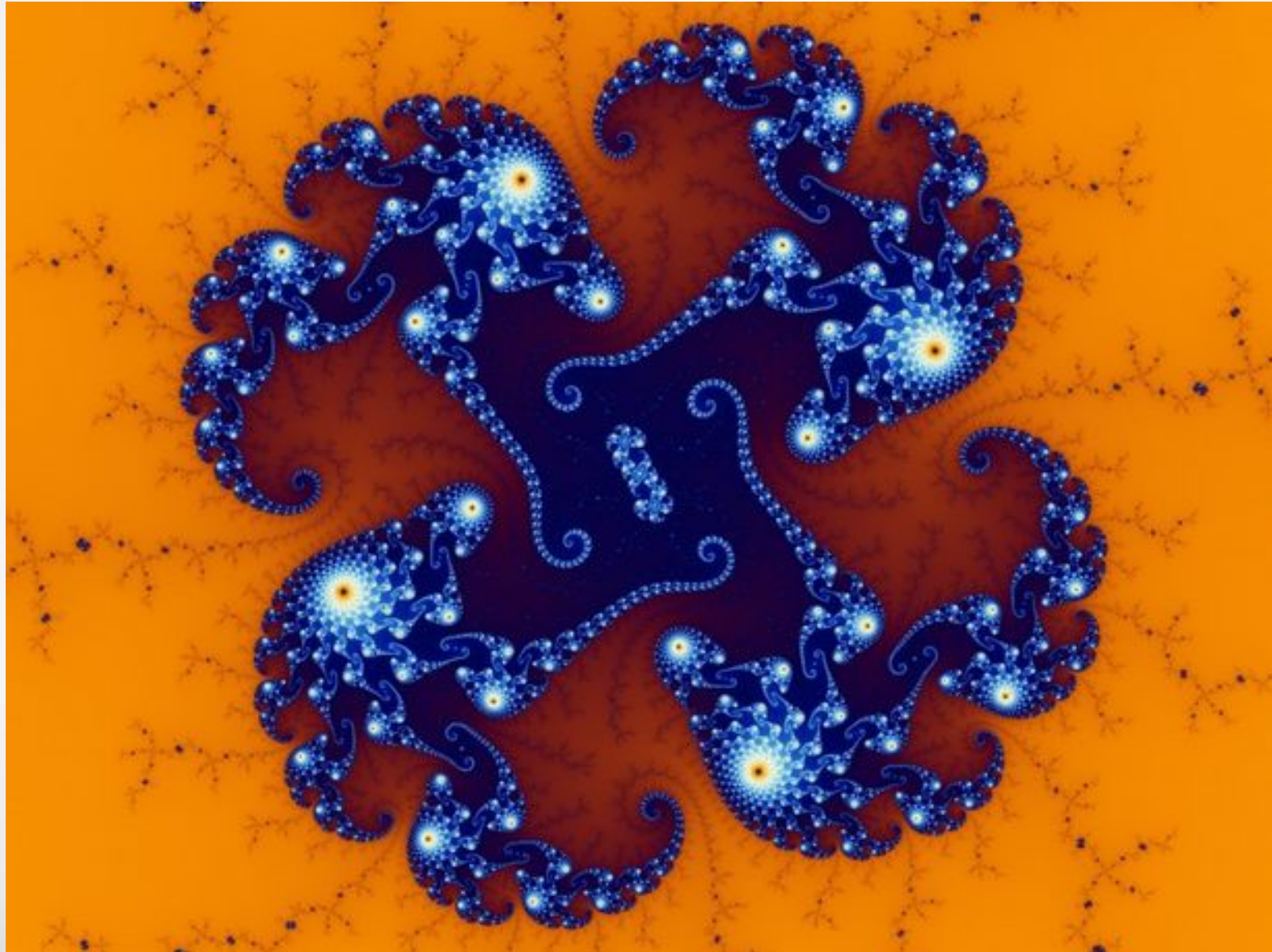
Frattali



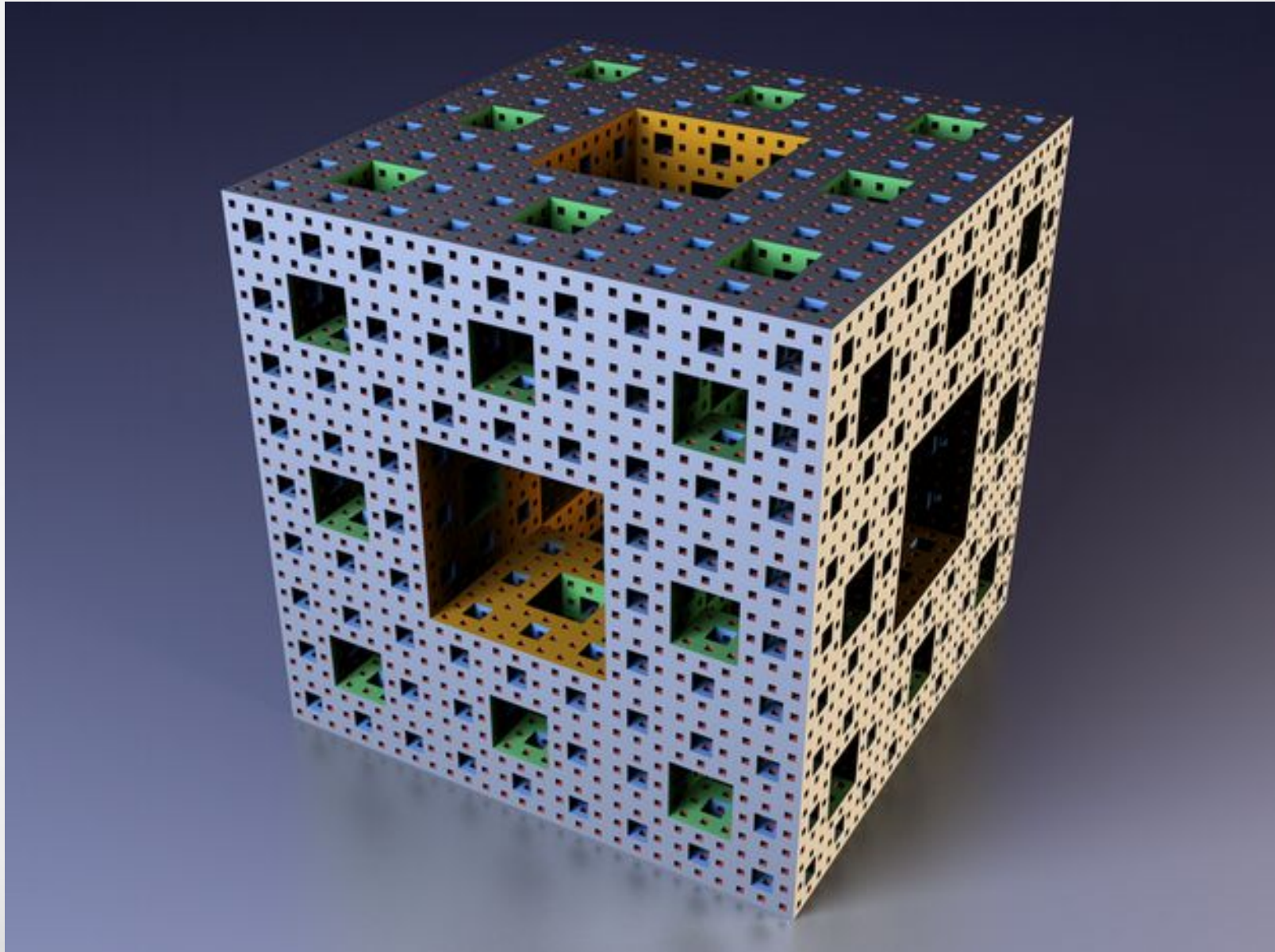
Frattali



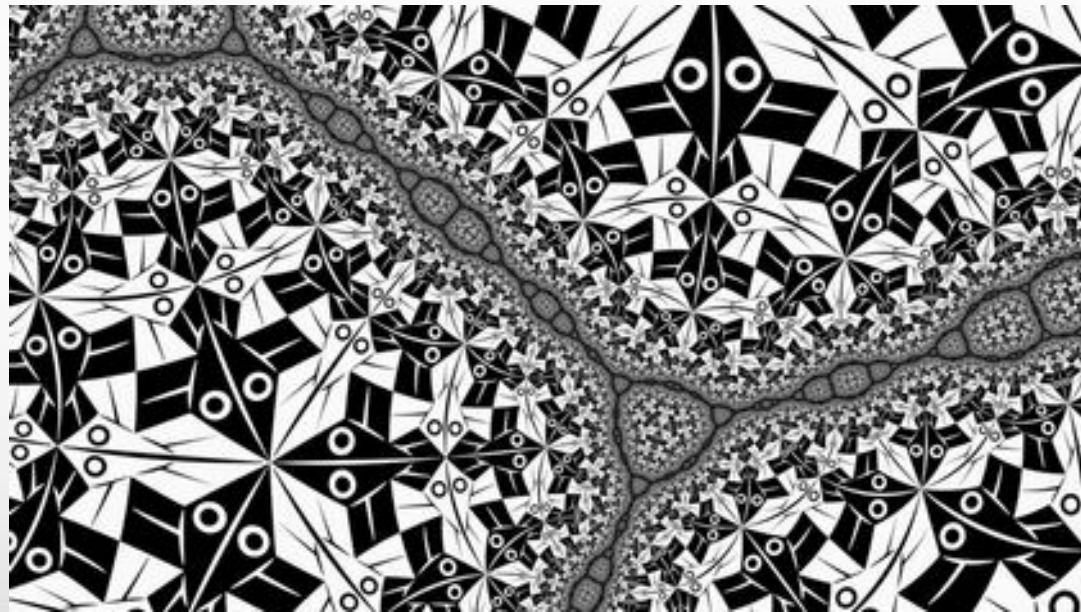
Frattali



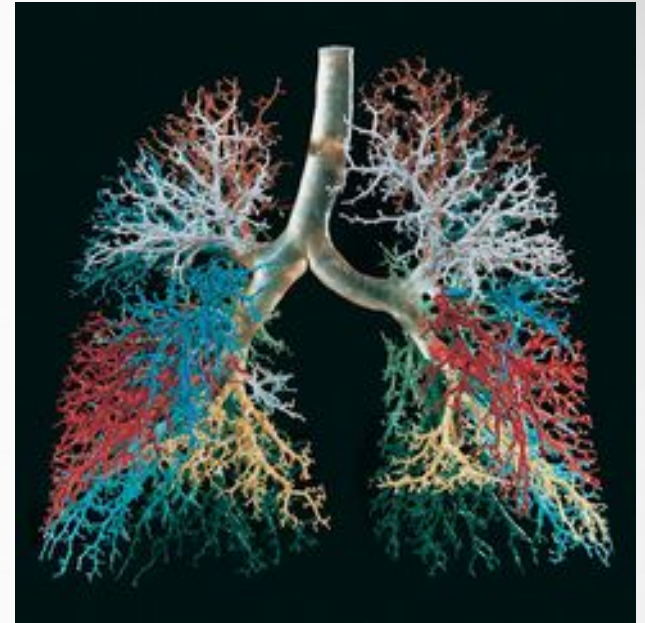
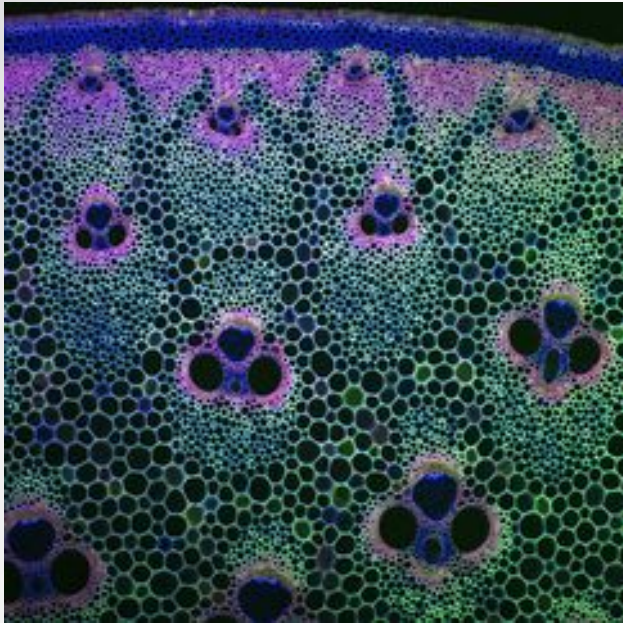
Frattali



Arte frattale



Natura frattale



Frattali natura

