

MILESTONE 1.1

1. GENERAL INFORMATION

PROJECT: SOCIAL HOUSING LA CITÉ DU CENTENAIRE

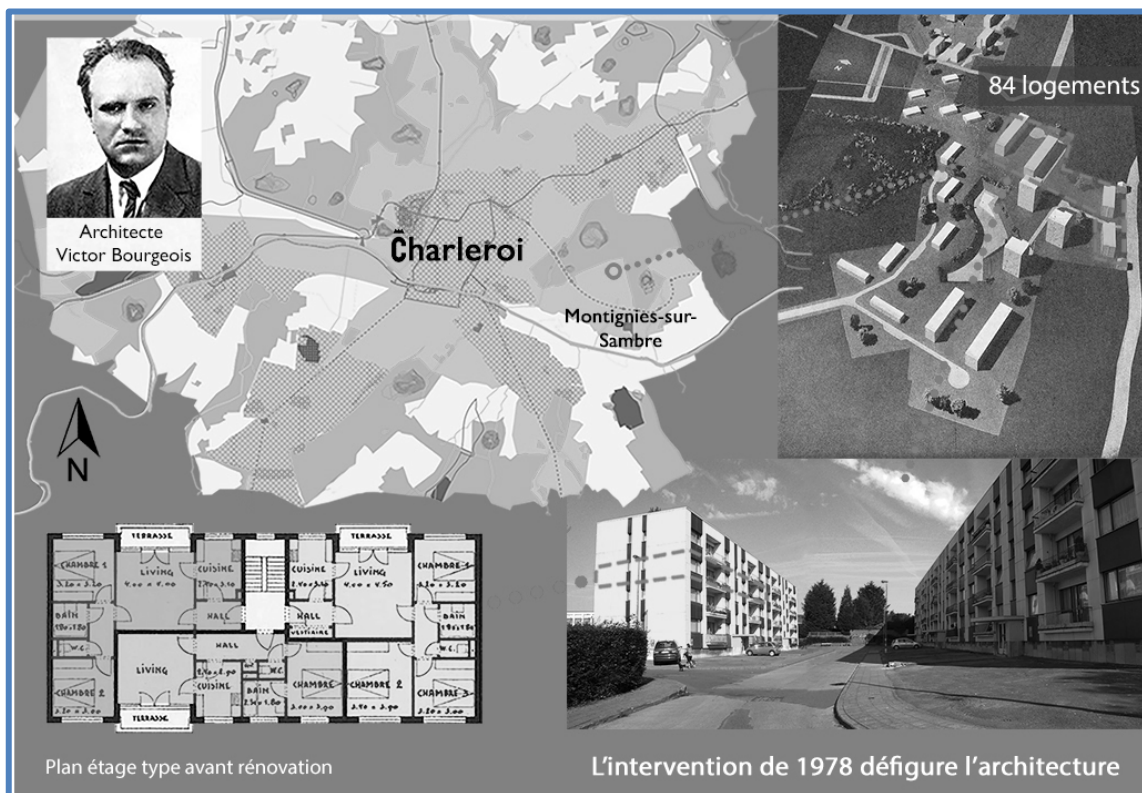
CONTEXT: CHARLEROI, BELGIUM

ORIGINAL USE: SOCIAL HOUSING

USE: SOCIAL HOUSING

DESIGNER(S): STRARTECH MANAGEMENT GROUP

COMPLETION DATE: 2017



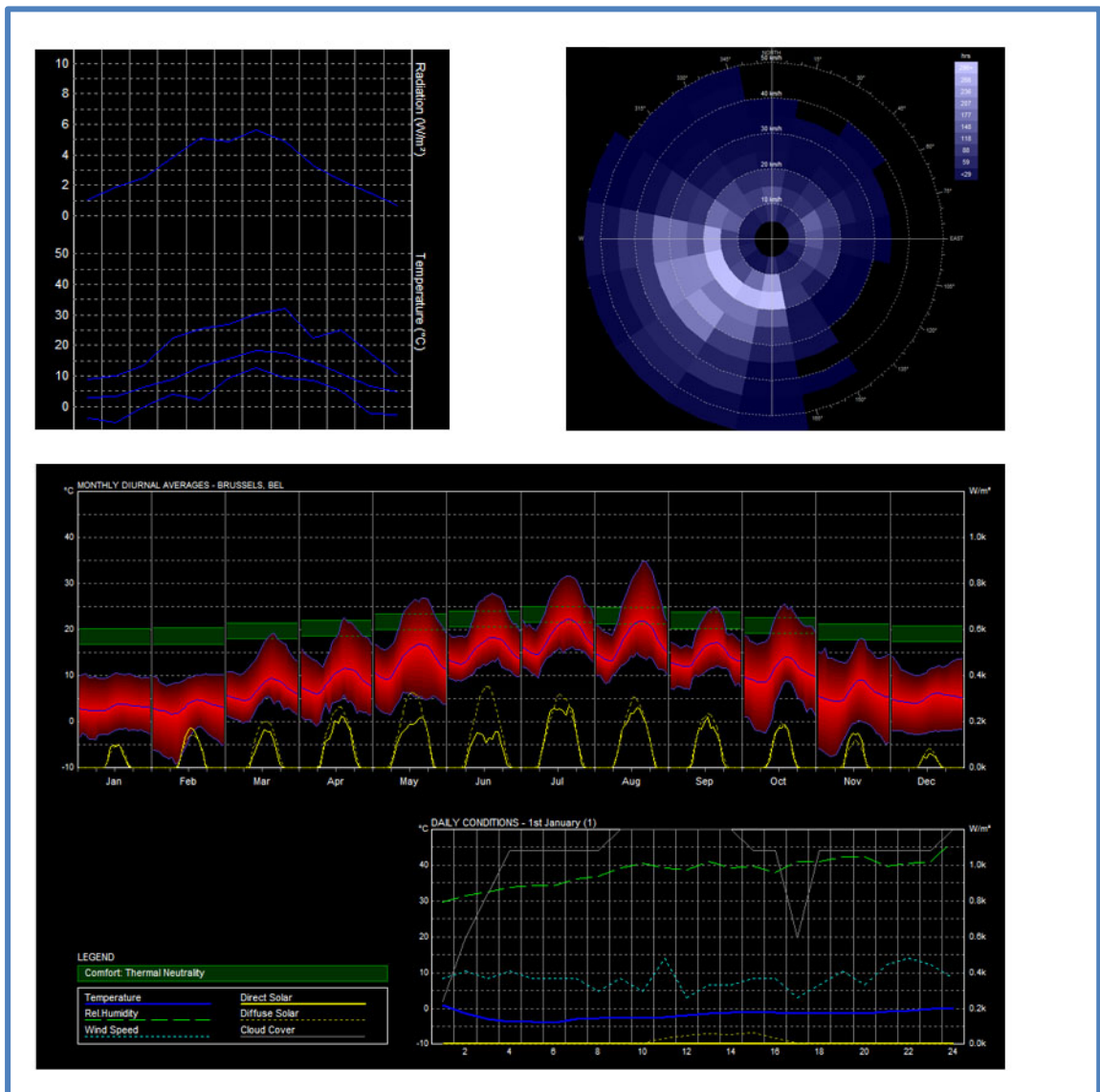
KEY WORDS:Reduction the Environmental Footprint, Balanced Choice of Materials, Comfort of the Inhabitants, Environmental Performance, Aesthetic Values, Active participation, Artistic expression



2. CLIMATIC FEATURES

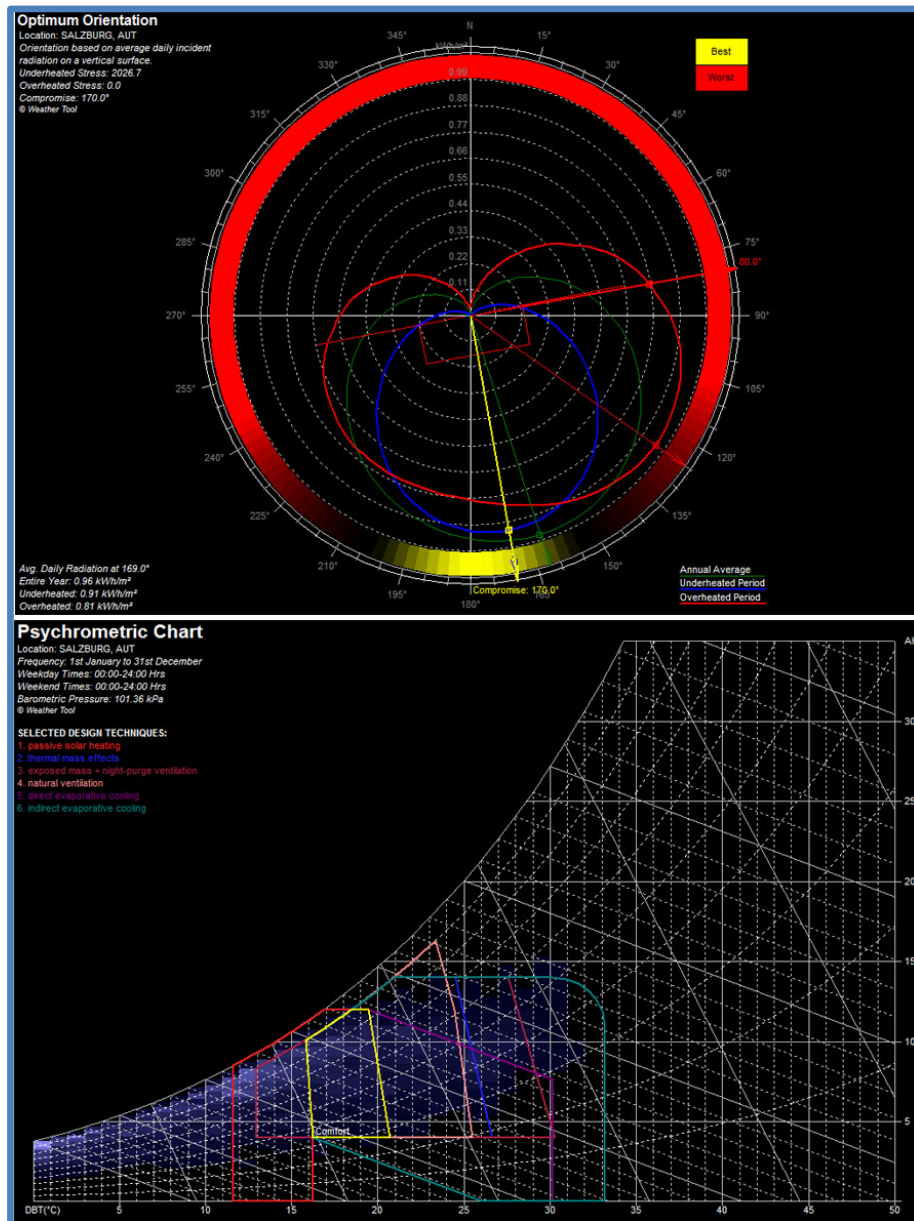
CLIMATE SUMMARY:

- MONTHLY DATA: RADIATION (W/mq); MAX, MID, MIN TEMPERATURE °C
- PREVALLING WIND (WIND FREQUENCY – Hrs)
- HOURLY DATA – MONTHLY DIURNAL AVERAGES
- DAILY CONDITION (1ST JAN



3.BIOCLIMATIC FEATURES

- OPTIMUM ORIENTATION
- COMBINATION OF PASSIVE ENERGY STRATEGIES



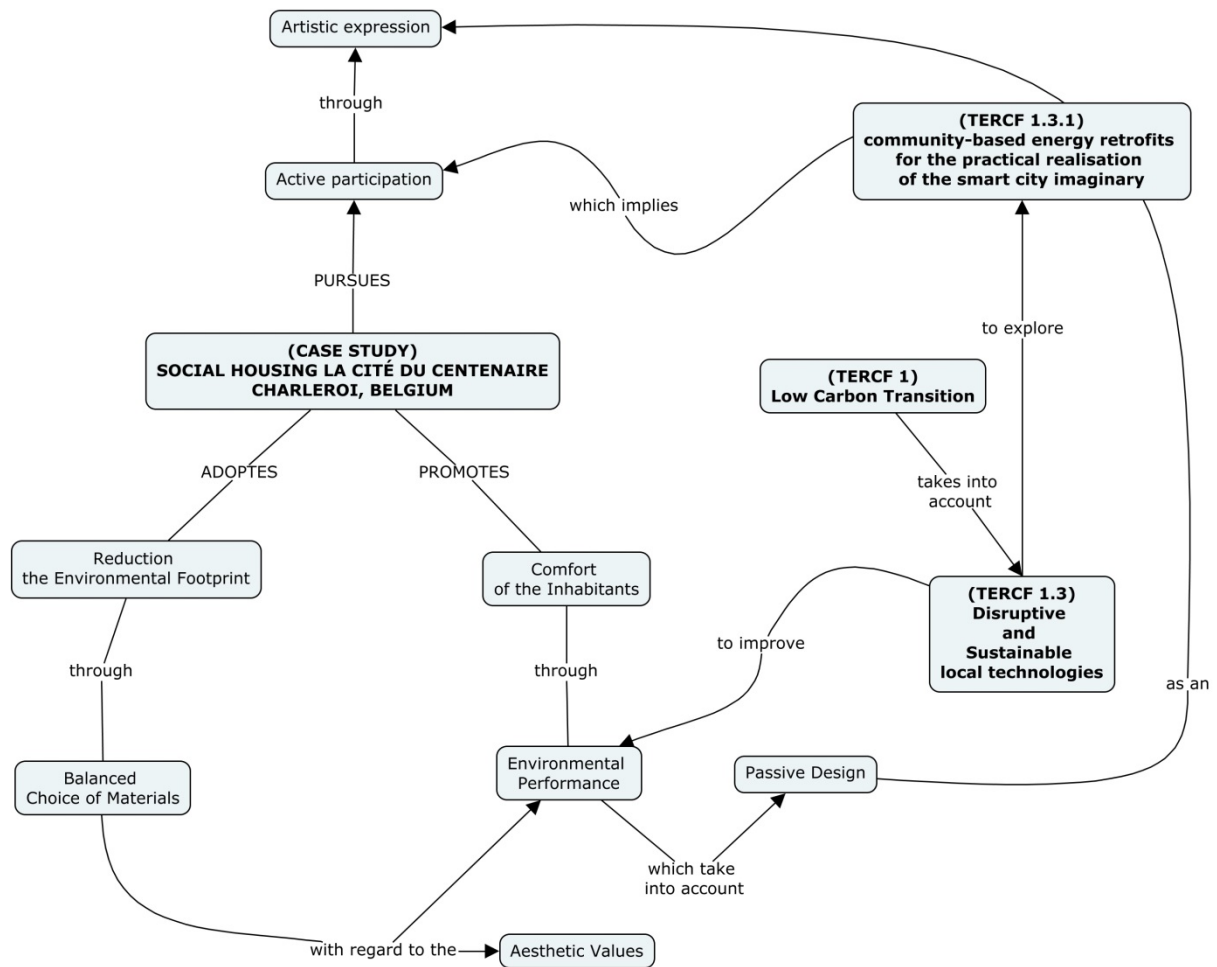
4. URBAN AND/OR BUILDING FEATURES

The main concern of this intervention is to create a pleasant and generous living environment for the occupants in a neighbourhood on a human scale. The objectives are: - To give a residential character and to personalize the buildings by asserting each building as a different entity in order to break their repetitive and depreciative character; - To adopt a sobriety in the architectural and artistic expression by the employment of a clear vocabulary aimed at efficiency by a balanced choice of materials, selected above all for their environmental performance and their effect on the aesthetics of the premises; - Improve the comfort of the inhabitants by increasing the living area of the dwellings; - Propose a range of housing units that allow a wide range of housing; - Limit the energy costs of the tenants by favouring the passive design for the renovation of the houses; - Reduce the environmental footprint; - To favour the modes of soft travel by reducing the pressure generated by the presence of the automobile. The project is therefore not limited to a simple renovation of housing but to a global overhaul and a complete requalification of the neighbourhood.



5. FOCUS QUESTION AND MAP

How to increase the social impact of ER actions?





MILESTONE 1.1

6. REFERENCES

Case Study : Rehabilitation of the Cité du Centenaire in Montignies-surSambre in an eco-district
Website : <https://www.construction21.org/>



H2020 MSCA IF2016
c-mapER Grant Agreement 751376

OXFORD
BROOKES
UNIVERSITY