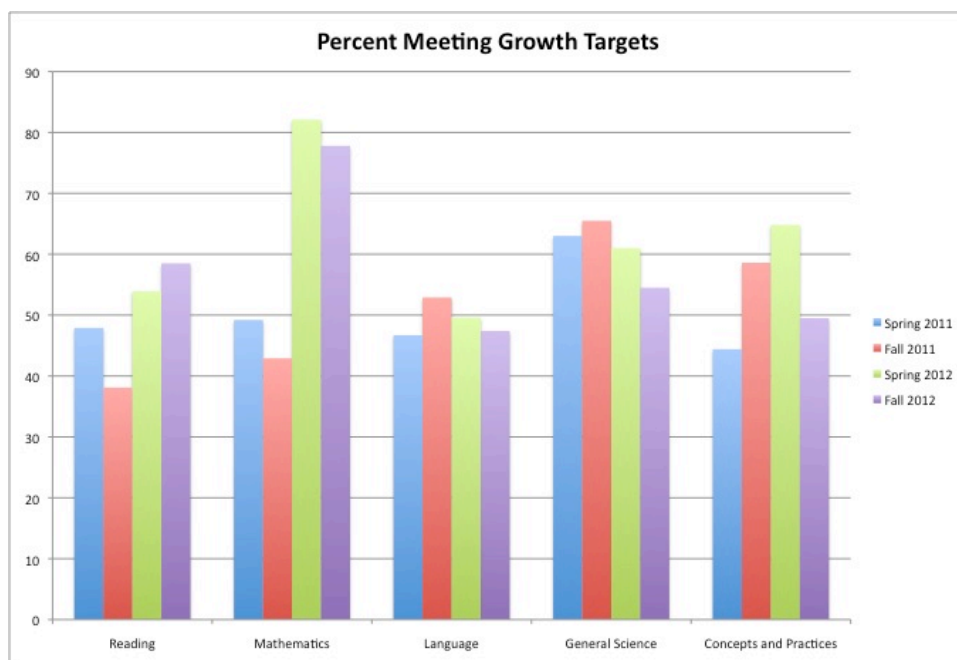
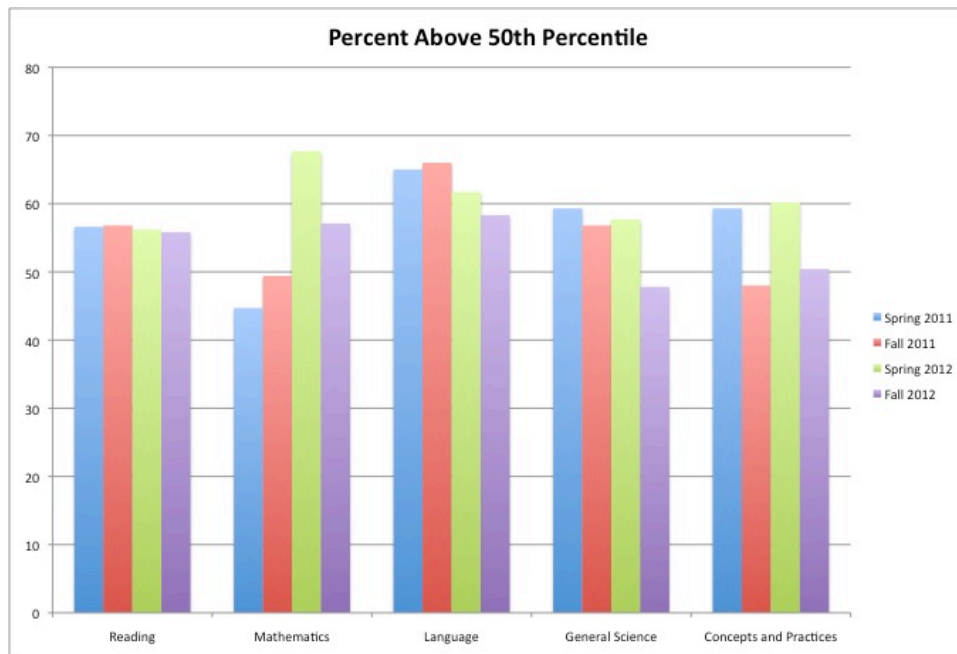


## MAP Data

At Lyons-Decatur Northeast, five MAP tests were given. They were administered from fall 2010 to fall 2012. Every student in grades second through eleven was tested in reading, language and math. In science, grades five-eleven were tested. Charts shown below depict data from four tests, spring 2011 to fall 2012, to show growth and percent proficient above the 50<sup>th</sup> percentile.



## Reading

In reading, slightly less than half of our students met their growth targets (49.6%). There is a general upward trend for meeting growth targets from 47.9% in the spring of 2011 to 58.5% in the fall of 2012. The percent of students testing above the 50<sup>th</sup> percentile declined 0.8% from spring 2011 to fall 2012.

## Math

Overall, the average of our students meeting growth target is 63%. In math MAP scores, there is a significant increase in the number of students meeting their growth targets. In the spring of 2011, 49.2% met growth targets while in the fall of 2012 the number rose to 77.8%. The number of students testing above the 50% percentile increased from 44.7 to 57.1%.

## Language

Overall, the average of our students meeting growth target is 49.1%. The trend has remained consistent. In the spring of 2011, 46.7% met growth targets while in the fall of 2012 it increased slightly to 47.4%. The number of students testing above the 50% percentile decreased from 65% to 58.3%.

## General Science

Overall, the average of our students meeting growth target is 61%. In general science there is a decline in the trend line. In the spring of 2011, 63% met growth targets while in the fall of 2012 it fell to 54.5%. The number of students testing above the 50% percentile decreased from 59.3% to 47.8%.

## Concepts and Practices

Overall, the average of our students meeting growth target is 54%. There is no trend as scores were up and down. In the spring of 2011, 44.4% met growth targets while in the fall of 2012 it increased to 49.5%. The number of students testing above the 50% percentile decreased 59.3% to 50.4%.

