

Assessing the risk of hypoxic blackwater generation at proposed SDL offset project sites on the lower River Murray floodplain

Prepared by: Nathan Ning, Danielle Linklater, Darren Baldwin and Lee Baumgartner



September 2014

Final report

MDFRC Publication 37/2014



Assessing the risk of hypoxic blackwater generation at proposed SDL offset project sites on the lower River Murray floodplain

Final Report prepared for the Mallee CMA by The Murray-Darling Freshwater Research Centre.

The Mallee Catchment Management Authority
PO Box 5017
Mildura, Victoria 3502
Ph: (03) 50514322

This report was prepared by The Murray-Darling Freshwater Research Centre (MDFRC). The aim of the MDFRC is to provide the scientific knowledge necessary for the management and sustained utilisation of the Murray-Darling Basin water resources. The MDFRC is a joint venture between the Murray-Darling Basin Authority, La Trobe University and CSIRO.



LA TROBE
UNIVERSITY

For further information contact:

Nathan Ning

The Murray-Darling Freshwater Research Centre
PO Box 991
Wodonga VIC 3689 | Mildura VIC 3502
Ph: (02) 6024 9650; Fax: (02) 6059 7531 | Ph: (03) 5051 4050; Fax: (03) 5023 6248

Email: n.ning@latrobe.edu.au
Web: www.mdfrc.org.au
Enquiries: info@mdfrc.org.au

Report Citation: Ning N, Linklater D, Baldwin D, Baumgartner L (2014) Assessing the risk of hypoxic blackwater generation at proposed SDL offset project sites on the lower River Murray floodplain. Final Report prepared for the Mallee CMA by The Murray-Darling Freshwater Research Centre, MDFRC Publication 37/2014, September, 38pp.

Cover Image: Barbers Creek

Photographer: Kerry Whitworth

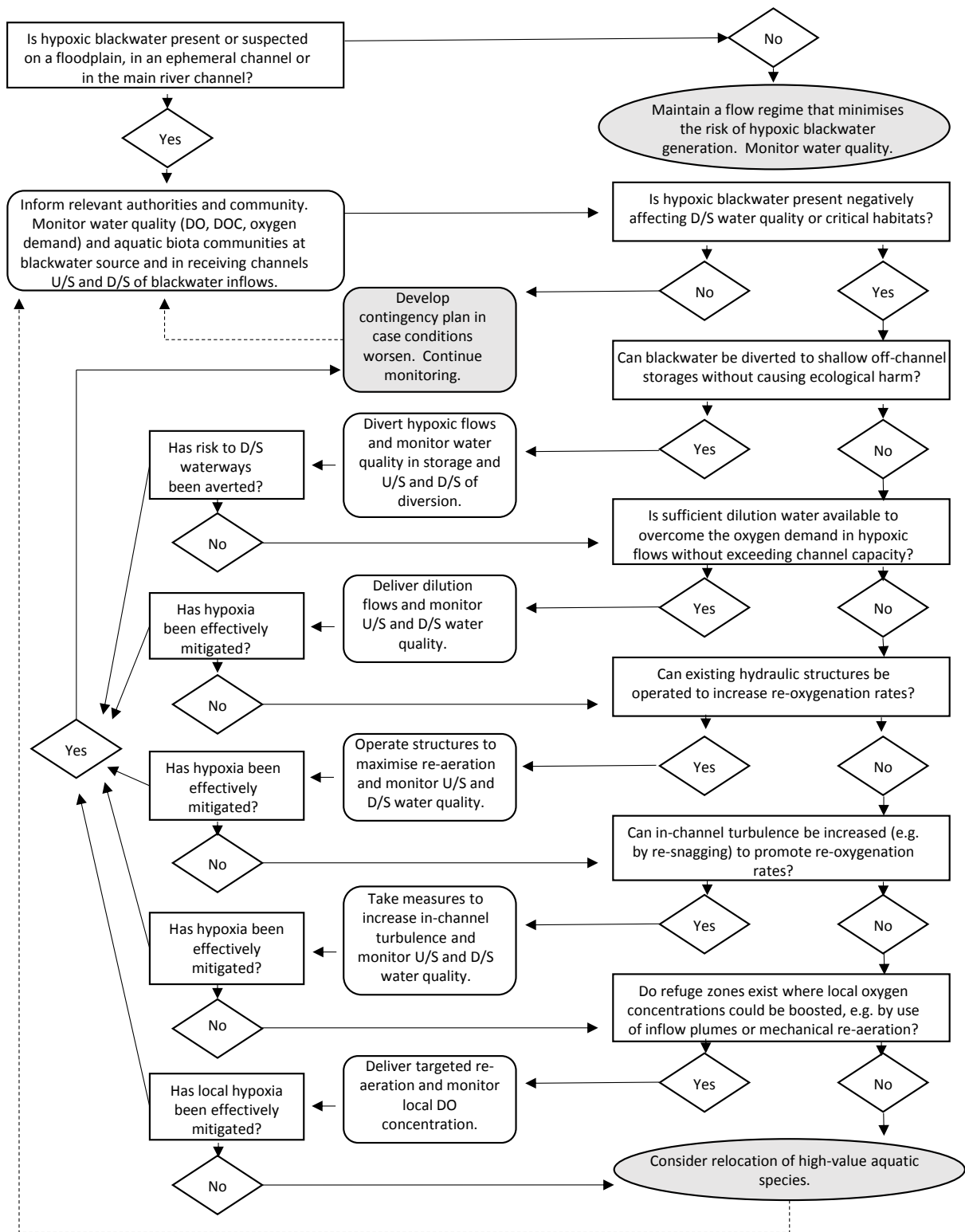


Figure 1 Action support tool to determine intervention activities for managing hypoxic blackwater (Whitworth *et al.* 2013)