

# TIBCO Business Studio

As the discipline of business process management (BPM) and its associated technologies evolve, so does the complexity of the processes that are managed. There are more assets to incorporate and more people involved in the process, both inside and outside the organization. Modeling and managing processes is becoming more and more difficult and there is ongoing pressure to move from modeling to execution in a timely and accurate manner. Process owners must be able to work collaboratively with IT throughout the entire life cycle of the process to ensure that the processes implemented serve the business requirement.

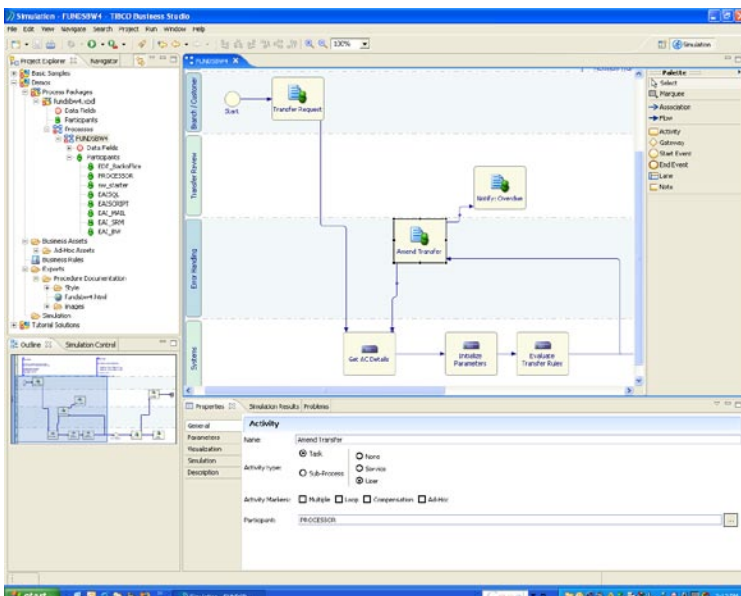
TIBCO Business Studio™ software addresses these challenges by providing a business-oriented modeling environment that is structured in a way that encourages proper management of business processes. Rather than having one place where business processes are modeled, another place where they are simulated and a third place where documentation associated with those processes is stored, Business Studio unites all of these capabilities in one product, providing a seamless method to move from modeling into process execution. This makes it possible for a business person to not only own the process, but intelligently manage the process, from pre-model planning, to modeling, simulation, re-modeling, and forward to execution.

## AT A GLANCE

**TIBCO Business Studio** software unifies three key elements of business process management in one environment: modeling, management and simulation. Business-level modeling supports collaboration between business and IT users, inclusion of important non-process business assets and the ability to simulate process execution.

## BENEFITS

- Saves time and minimizes rework by enabling business users to define processes in business terms. The resulting processes are easy to understand, because they are based on a standard modeling notation.
- Increases the value and longevity of business process models by enabling users to associate documents such as notes from meetings, organizational charts or anything else with a given business process. Associating information pertinent to the process, but not actually a part of the process, gives a more complete picture of the process and helps with knowledge transfer as the process evolves.
- Reduces trial and error by optimizing processes before they are deployed. TIBCO Business Studio includes advanced simulation capabilities. By using this function it is possible to make processes as efficient and cost-effective as possible prior to deployment.
- Saves time by providing a seamless path to execution. Users can import models from IDS Scheer's ARIS or XPDL and implement 'finished' processes with TIBCO iProcess™ Engine or other workflow engines (again using XPDL).



A process being modeled in Business Studio



## ATTRIBUTES & CAPABILITIES

### Standards-Based Modeling

TIBCO Business Studio is standards-based with support for BPMN and XPD. When defining a model, Business Studio will recognize problems with the model and walk the user through how to make the model compliant.

### Guided Modeling

TIBCO Business Studio provides guided modeling, helping ensure that process models adhere to corporate methodologies. Those methodologies might be external, such as Six Sigma or Prince methodologies, or an organization's custom methodology.

### Advanced Simulation

A variety of properties, such as cost, number of assets available, etc., can be assigned to each process participant and activity. These properties are used in simulation along with work distribution algorithms to identify bottlenecks, process costs, under-utilized resources and more. The possible distribution algorithms represent a variety of real-life situations, for example work might be coming in at a constant rate, exponentially, uniformly, or normally.

### Collaborative, Project-Based Organization

Designing processes is not a simple, discrete task. It requires a wide range of information and the input of many people. For this reason, TIBCO Business Studio provides a multi-designer environment, with a tiered organization. Each process model is actually a part of a larger project plan, which may have several associated processes

### Associate Non-Process Business Assets with Processes

Processes have a wealth of information that is taken into consideration during their creation. In TIBCO Business Studio, business assets that are applicable to a particular process, but not necessarily a part of it, can be stored within that process's project folder, from business rules to organizational charts to analyses captured in Excel spreadsheets.

### Automated Process Documentation and Version Control

HTML process documentation is generated automatically. Business Studio also integrates with many commercially available revision control systems, enabling organizations to leverage existing systems for version control.

## PLATFORM, STANDARDS AND SECURITY

Microsoft Windows (x86)

- Windows 2003 Server
- Windows XP Professional
- Windows 2000 with Service Pack 2 or later

Third-Party Software:

- JRE 1.5.0 (included in installation)
- Microsoft Internet Explorer Version 6

**TIBCO Software Inc.** (NASDAQ: TIBX) is a leading independent business integration software company and a leading enabler of real-time business, helping companies become more cost-effective, more agile and more efficient. TIBCO has delivered the value of real-time business, what TIBCO calls The Power of Now®, to thousands of customers around the world and in a wide variety of industries.

©2006, TIBCO Software Inc. All rights reserved. TIBCO, the TIBCO logo, The Power of Now, TIBCO Software, TIBCO Business Studio and TIBCO iProcess are trademarks or registered trademarks of TIBCO Software Inc. in the United States and/or other countries. All other product and company names and marks mentioned in this document are the property of their respective owners and are mentioned for identification purposes only. 03/06



[www.tibco.com](http://www.tibco.com)

Global Headquarters  
3303 Hillview Avenue  
Palo Alto, CA 94304

**Tel:** +1 650-846-1000  
+1 800-420-8450

**Fax:** +1 650-846-1005