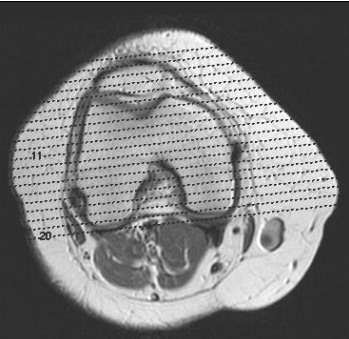
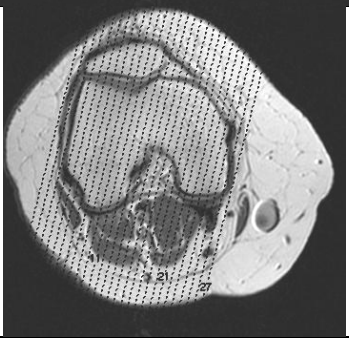
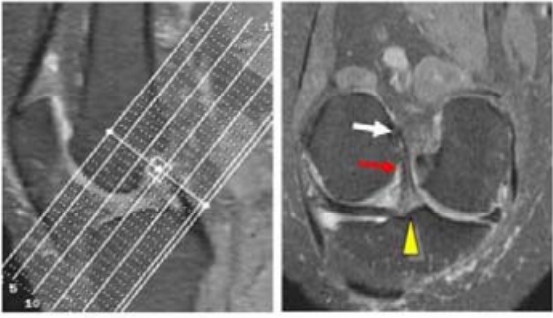
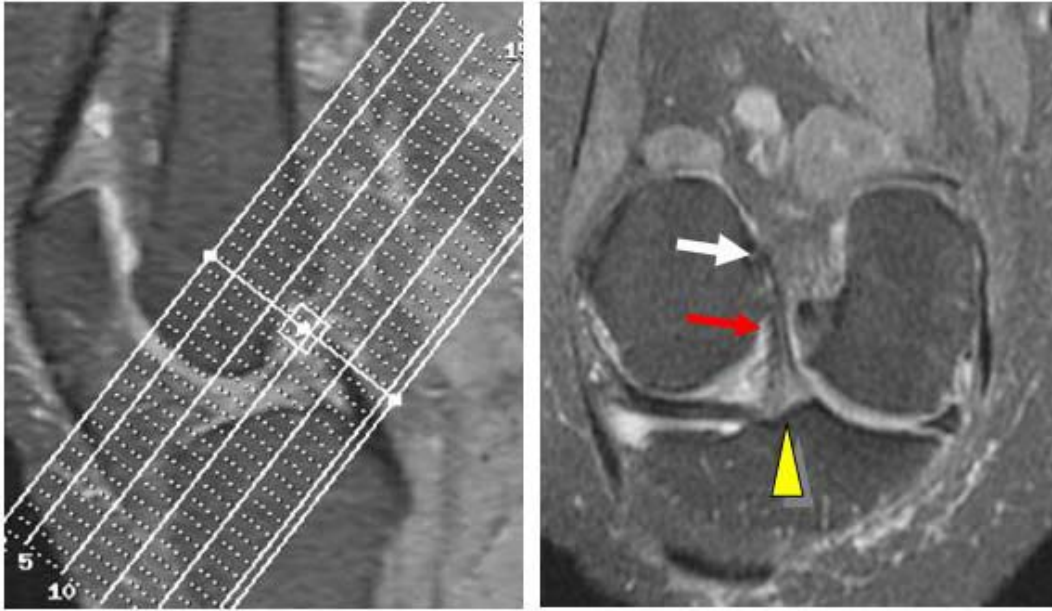


KNEE PROTOCOL (13 minutes)

Sequence	Description	
3 Planes Localizer	A dedicated transmit/receive coil is used and the knee is positioned in a slightly flexed position to delineate the morphology of the anterior cruciate ligament. The knee is also rotated 15 degrees externally.	
Axial PD Fat Sat (25 slices) FSE (1min 30s)	25 (4mm) slices from above the patella to the tibial tuberosity	
Coronal PD Fat Sat (37slices) FSE (6min 48s)	Slices (2mm/0gap) from the anterior part of the patella to beyond the tibial condyles. These views are used to reformat an enface view of the ACL.	
Sagittal PD Fat Sat (25 Slices) FSE (5min 20s)	27 (4mm/0.4) slices oriented parallel to the lateral condyle using an axial image	
Reformatted obliques of ACL enface views	Using the reformat tool on console or advantage windows upload the Coronal images. Prescribe a number of slices through ACL as shown.	



	Axial PD FatSat	Coronal PD FatSat	Sag PD FatSat
Sequence	FSEXLC	FSEXLC	FSEXLC
Imaging Options	EDR, TRF, ZIP512	EDR, TRF, ZIP512	EDR, TRF, ZIP512
# of echoes	1 ETL=3	1 ETL=3	1 ETL=3
TE	24	24	24
TR	4200	4200	4200
Bandwidth	20.83	20.83	20.83
SAT	Fat, S, I	Fat S,I	Fat, S, I
Frequency	256	256	256
Phase	256	256	256
PFOV	0.75	0.75	0.75
FOV	16 – 24	16 – 24	16 – 24
Slice THK	4	2	4
Gap	0	0	0.5