

Daniela Sacchi

CMAP **e LE MAPPE** **CONCETTUALI**

- Download**
 - [CmapTools v5.05](#)
 - [CmapServer v5.04.03](#)
 - [CmapLite v5.05](#)
- Privacy Statement**
- License Agreement**
 - [CmapTools](#)
 - [CmapServer](#)
- Release Notes**
 - [CmapTools](#)
 - [CmapServer](#)
- Known Issues**
 - [CmapTools](#)
 - [CmapServer](#)

Download IHMC CmapTools



The **IHMC CmapTools** program empowers users to construct, navigate, share and criticize knowledge models represented as concept maps. It allows users to, among many other features, construct their Cmaps in their per computer, share them on servers (CmapServers) anywhere on the Internet, link their Cmaps to other Cmaps on automatically create web pages of their concept maps on servers, edit their maps synchronously (at the same time) with on the Internet, and search the web for information relevant to a concept map.

CmapTools is used worldwide in all domains of knowledge and by users of all ages to graphically express their understar particular, CmapTools is used in schools, universities, government organizations, corporations, small companies, and off organizations, both individually and in groups, for education, training, knowledge management, brainstorming, organizing information, among other applications. The collaboration and publishing features provide a powerful means for represen sharing knowledge.

The **IHMC CmapTools** client is **FREE** for use by anybody, whether its use is commercial or non-commercial. In particular and universities are encouraged to download it and install it in as many computers as desired, and students and teacher make copies of it and install it at home.

Please fill out the following information to download **IHMC CmapTools**.

NOTE: If you have previously registered with us, you only need to enter your e-Mail address. Otherwise, all items marked asterisk (*) are required information.

*Email Address: If you previously registered only the Email address is needed.

*First Name:

*Last Name:

*Country:

*Organization/Company:

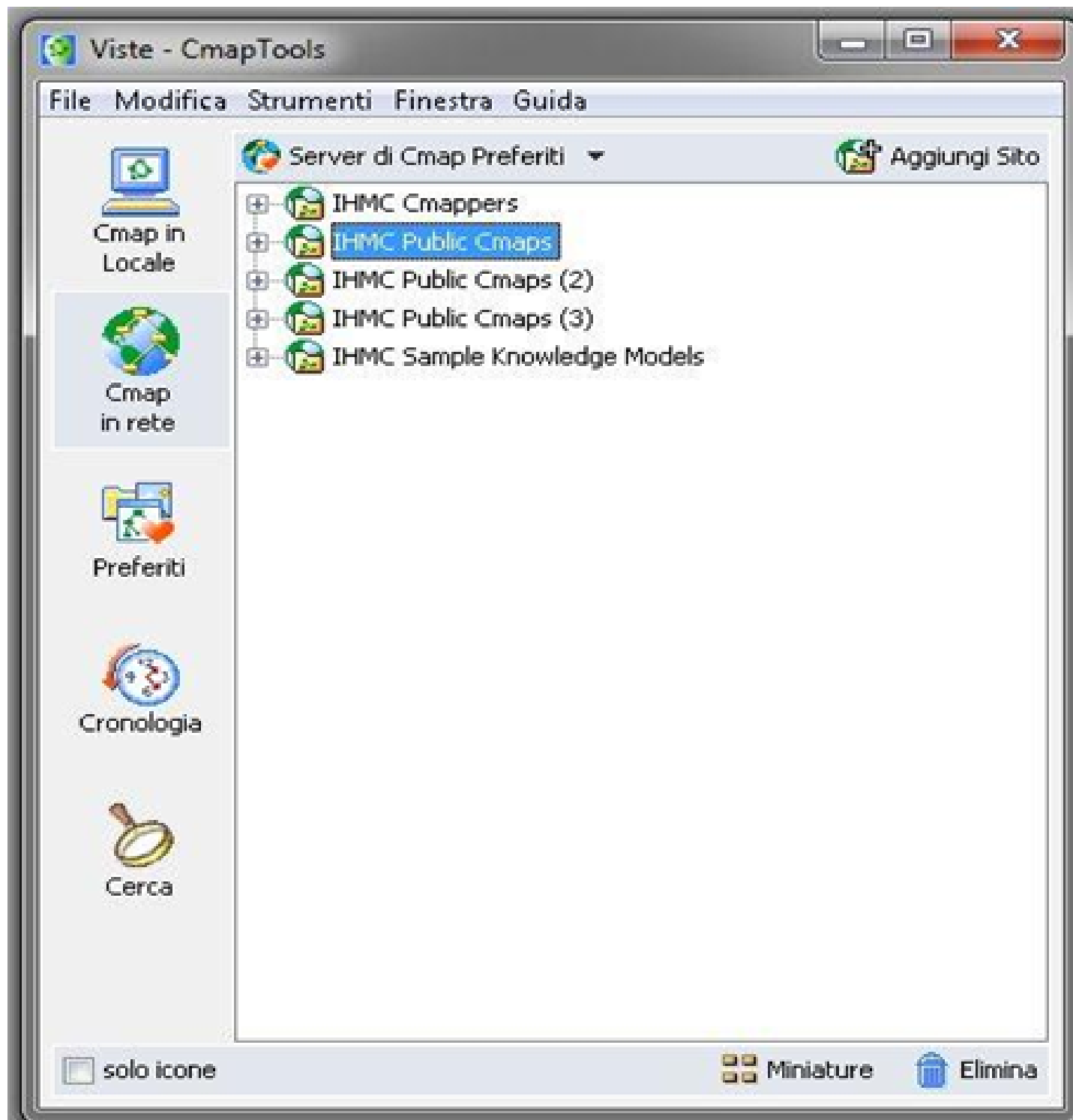
Organization's Name:

Organization's Website:

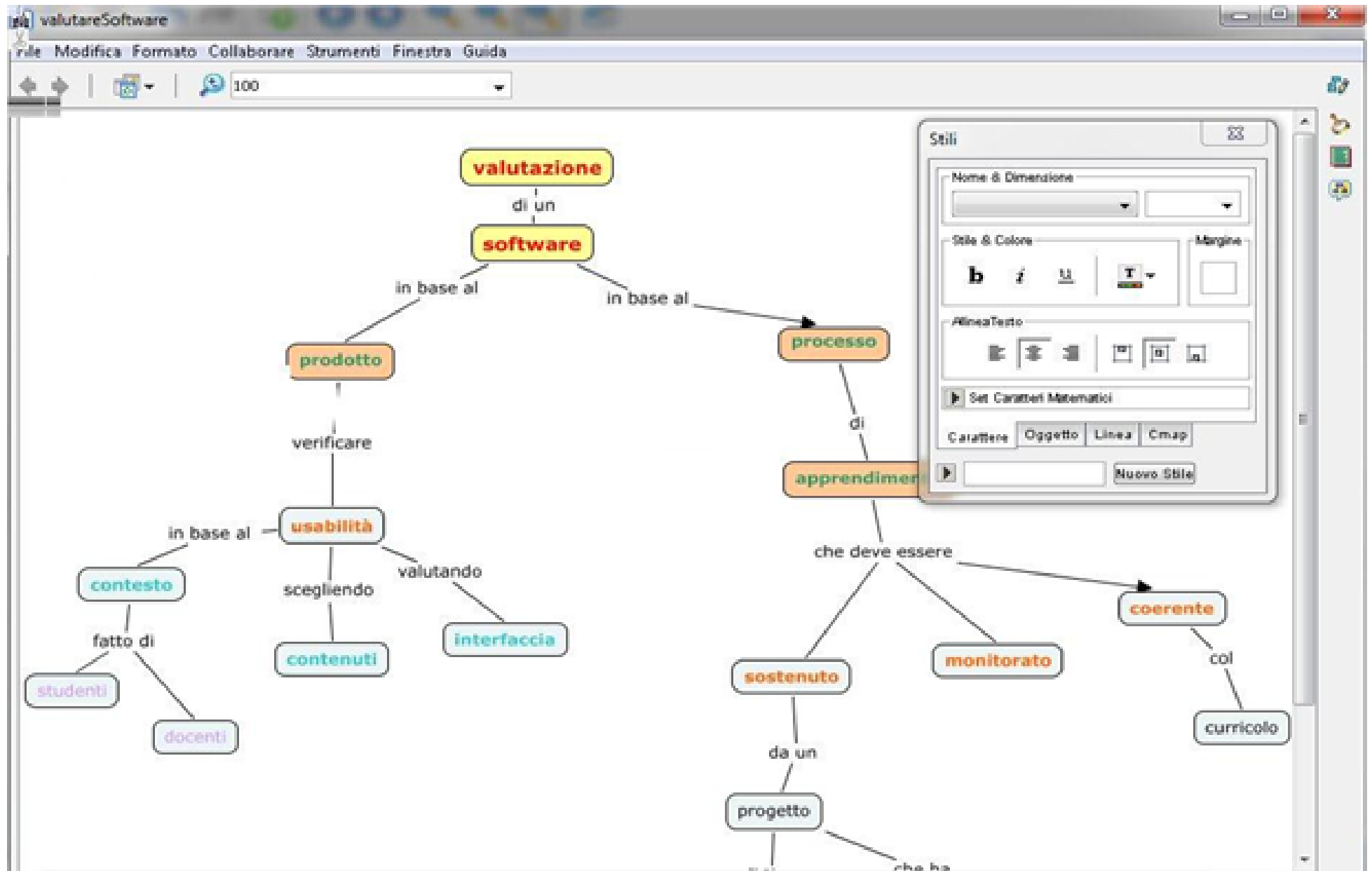
How did you hear about CmapTools?

Target Operating System:

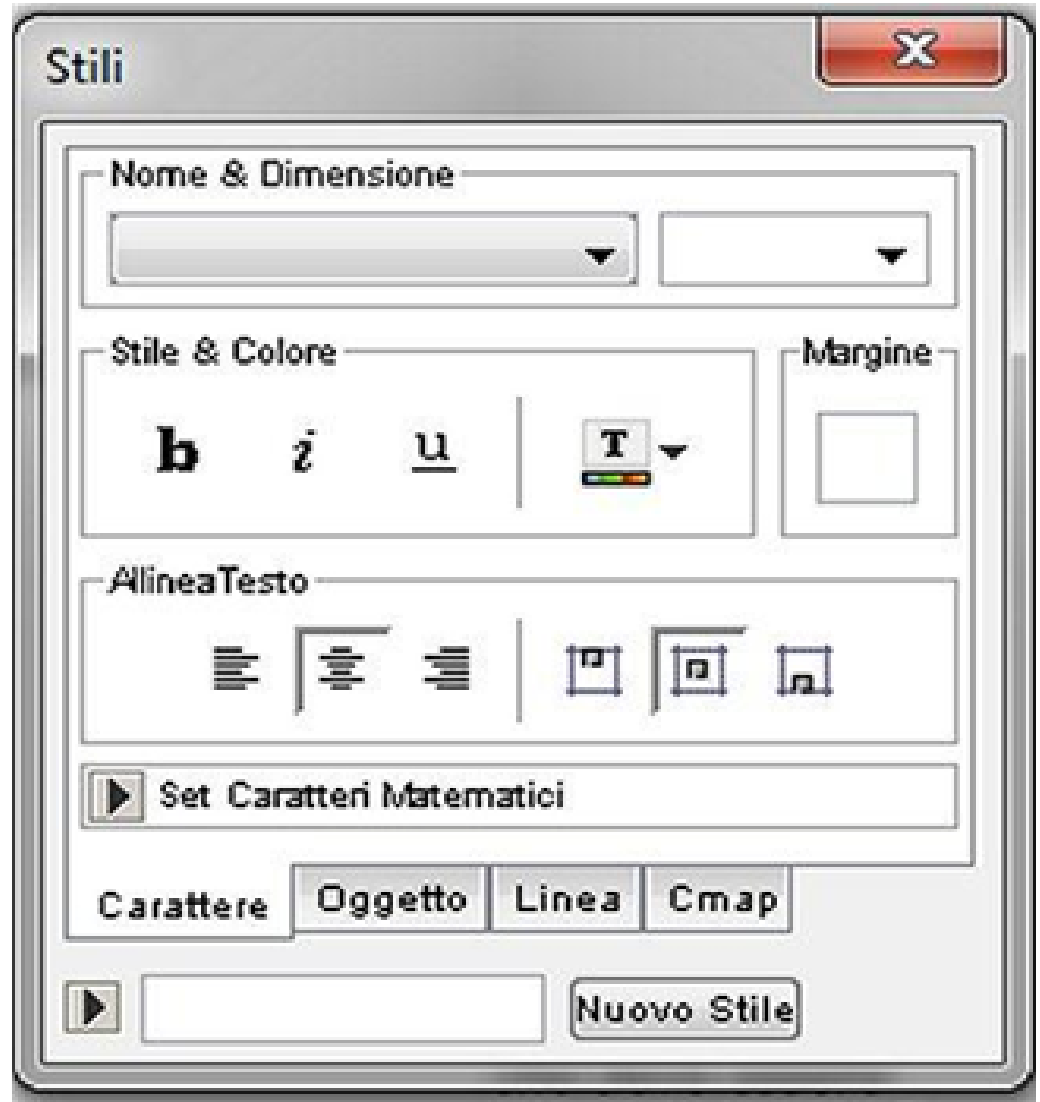
Come lavora CMAP



Formattare una mappa



La finestra degli STILI



Per salvare
una mappa

The screenshot shows the CmapTools application window titled "mappa val_sw Guenzi C". The menu bar includes "File", "Modifica", "Formato", "Collaborare", "Strumenti", "Finestra", and "Guida". The "File" menu is open, showing options such as "Nuova Cmap", "Chiudi Cmap", "Salva Cmap", "Salva Cmap Come...", "Esportare Cmap Come", "Visualizza come Pagina Web", "Anteprima di Stampa...", "Stampa...", and "Esci da CmapTools". The "Esportare Cmap Come" sub-menu is also open, listing various export formats: "File Immagine...", "Documento in Formato Portabile (pdf) ...", "Postscript ...", "Grafica Vettoriale Scalabile...", "Pagina Web...", "Cmap Profilo...", "Proposizioni in testo...", "File CXL...", "File XTM/XCM", "File IVML...", and "LifeMap...".

Below the menu, a conceptual diagram illustrates the structure of a map. The root node is "valutano" (highlighted in red). It has three outgoing arrows: one labeled "le sue" pointing to "caratteristiche" (highlighted in red), one labeled "||" pointing to "contesto" (highlighted in red), and one labeled "i" pointing to "contenuti" (highlighted in red). The "caratteristiche" node has three outgoing arrows labeled "come" pointing to three red boxes. The "contenuti" node has an outgoing arrow labeled "i" pointing to "processi" (highlighted in red). The "processi" node has an outgoing arrow labeled "di" pointing to "apprendimento" (highlighted in red). There are also some yellow boxes labeled "esi" and "dal" on the right side of the diagram.

Per una mappa multimediale

1° evidenziare il concetto nella mappa

2° aprire la finestra VISTE

3° creare una cartella per la mappa e i suoi collegamenti

4° dal desktop trascinare il file nella cartella della mappa

5° dal menu Modifica dare "Aggiungi/modifica collegamenti a risorse"

6° cliccare sul file da aggiungere e confermare con "Aggiungi alla lista"

7° nella stessa finestra cliccare su "Aggiorna"

Se si esporta la Mappa, va esportata anche tutta la cartella con i collegamenti

