

MILESTONE 1.1

1. GENERAL INFORMATION

PROJECT: HALLE PAJOL REFURBISHMENT

CONTEXT: PARIS, FRANCE

ORIGINAL USE: RAILWAY STORAGE

USE: MIX USE

DESIGNER(S): JAP JOURDA ARCHITECTES PARIS

CONSTRUCTION PERIOD: 2011-2013



Keywords: Functional Programme, Diversified functional mix, Ecological aspect, Recyclable material, Production from renewable sources, the relation between architecture and citizens, Need and requirements of the local population,



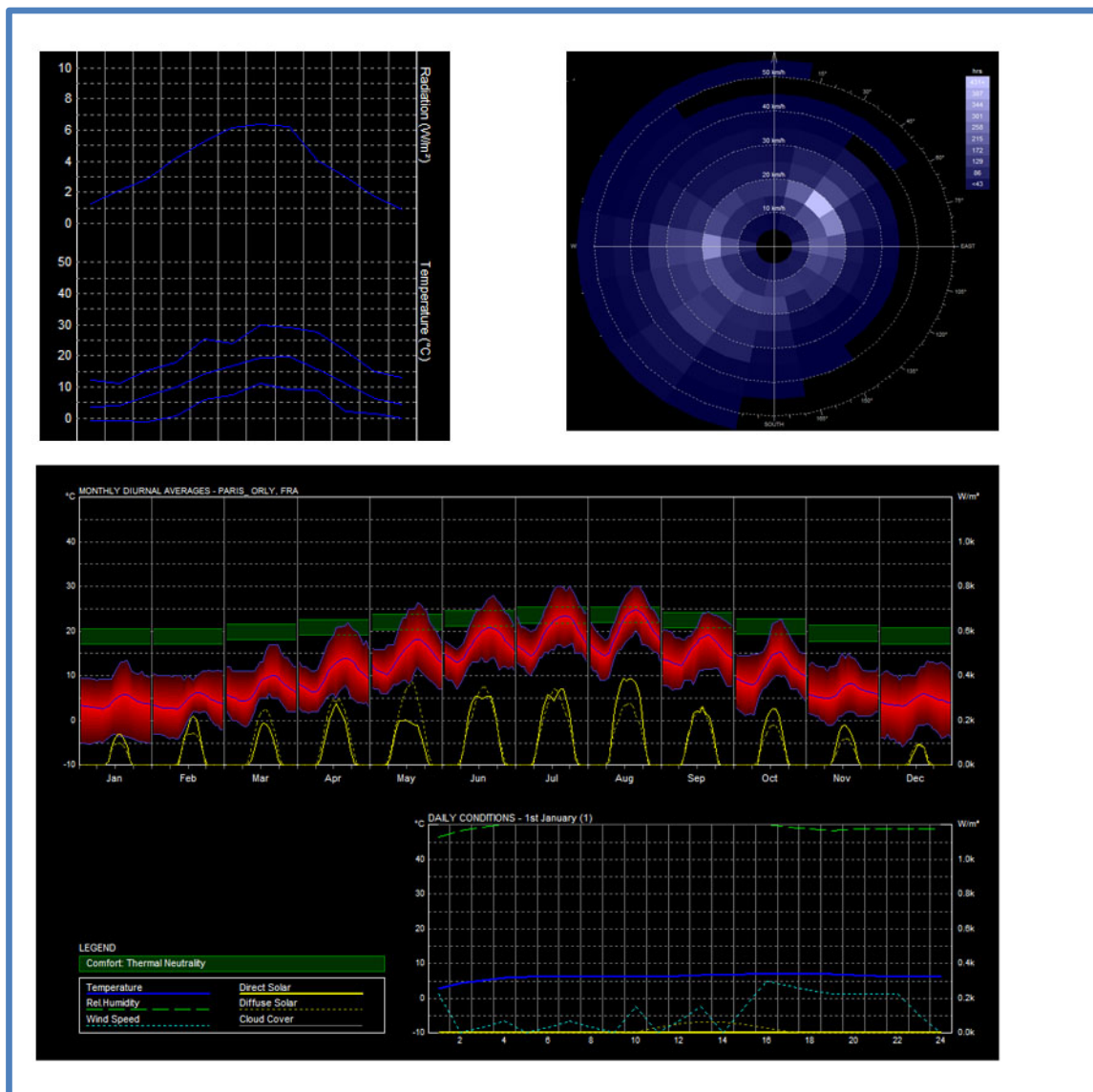
H2020 MSCA IF2016
c-mapER Grant Agreement 751376

OXFORD
BROOKES
UNIVERSITY

2. CLIMATIC FEATURES

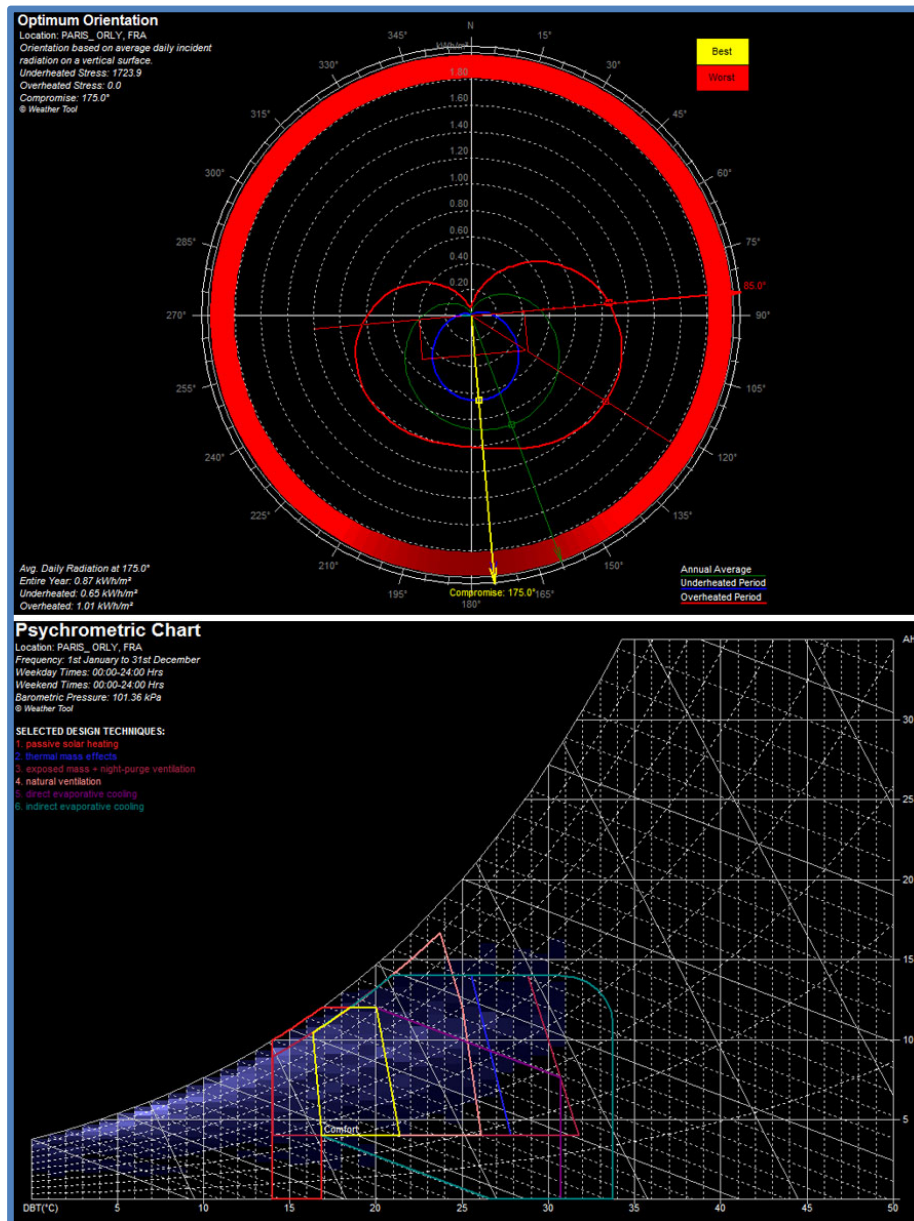
CLIMATE SUMMARY:

- MONTHLY DATA: RADIATION (W/mq); MAX, MID, MIN TEMPERATURE °C
- PREVALLING WIND (WIND FREQUENCY – Hrs)
- HOURLY DATA – MONTHLY DIURNAL AVERAGES
- DAILY CONDITION (1ST JAN



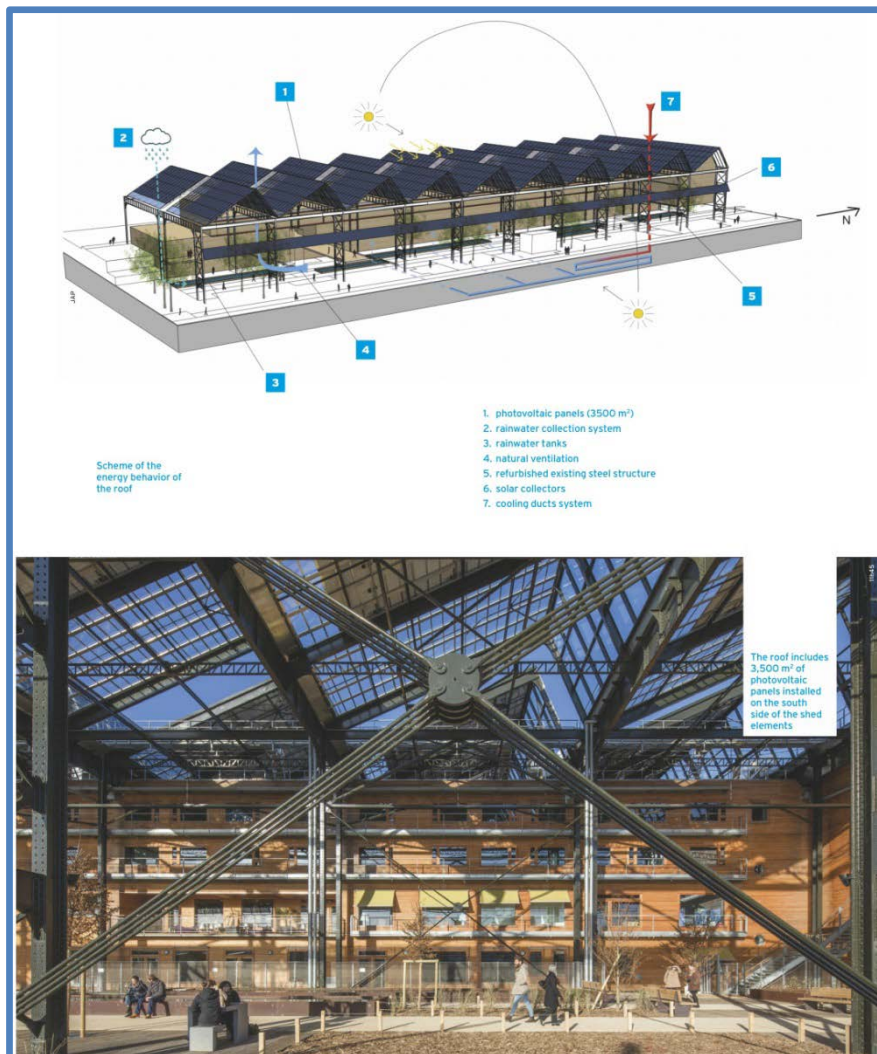
3.BIOCLIMATIC FEATURES

- OPTIMUM ORIENTATION
- COMBINATION OF PASSIVE ENERGY STRATEGIES



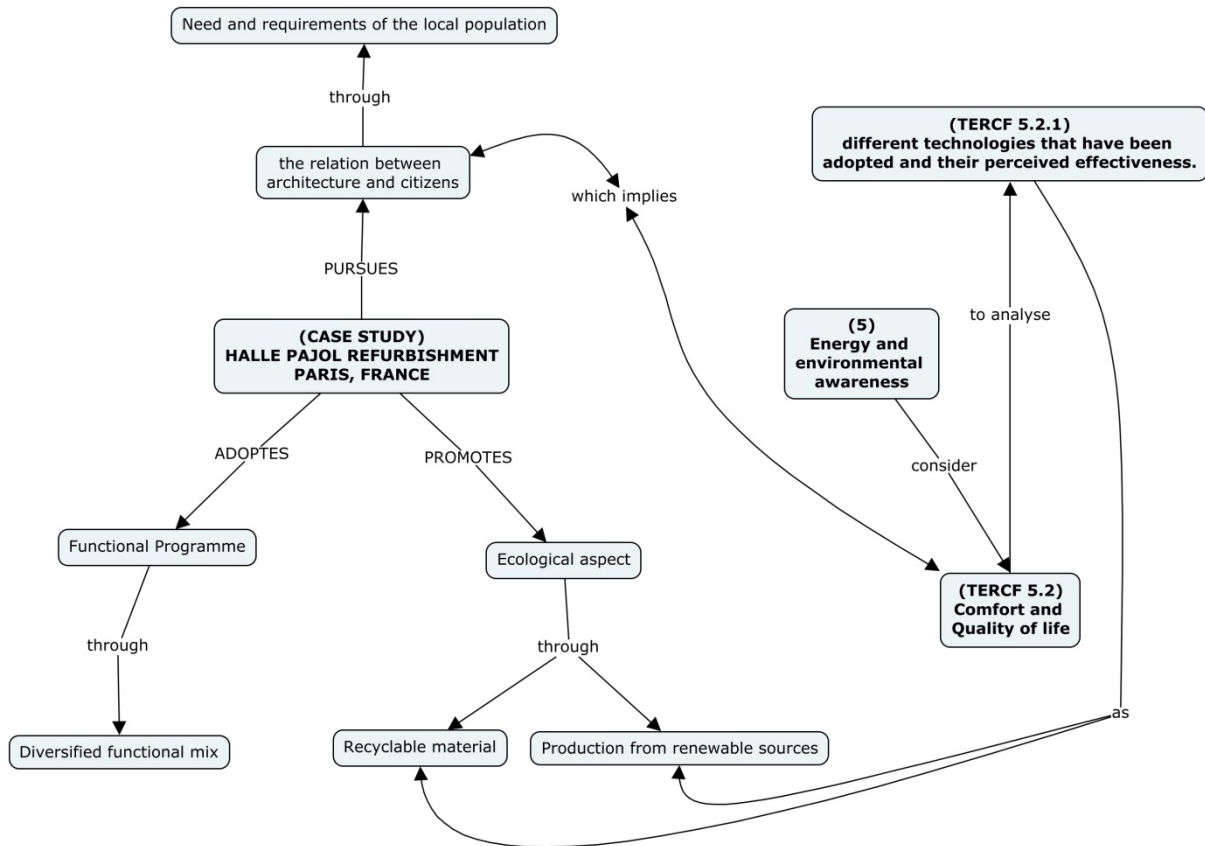
4. URBAN AND/OR BUILDING FEATURES

The requalification of the old Halle Pajol railway warehouses, located near the Gare de l'Est in the 18th arrondissement, in the hear of the La Chappelle district in Paris, is a unique and ambitious project through which the JAP practice – Jurda Architect Paris – has managed to enhance not only an old building but the entire district at the same time giving it a new vitality and a perspective or cultural and social re-birth. It is infact through the re-functionalization and the refurbishment of a steel building belonging to the 19th century industrial heritage that the French architect Françoise Helen Jourda manage to renew and completely transform the area enhancing the ecological aspect and the relation between architecture and citizens, with the objective to improve the quality of life and promote the awareness of an eco-sustainable architecture.



5. FOCUS QUESTION AND MAP

How to enhance the relation between architecture and citizens?





MILESTONE 1.1

6. REFERENCES

Jourda, F.H. (11-12-2013) Réhabilitation de la Halle Pajolet creation d'uejardin public, Paris 18e. Le courrier de l'architecte. Bezocht 21-10-2015 via:

http://www.lecourrierdelarchitecte.com/article_5101



H2020 MSCA IF2016
c-mapER Grant Agreement 751376

OXFORD
BROOKES
UNIVERSITY