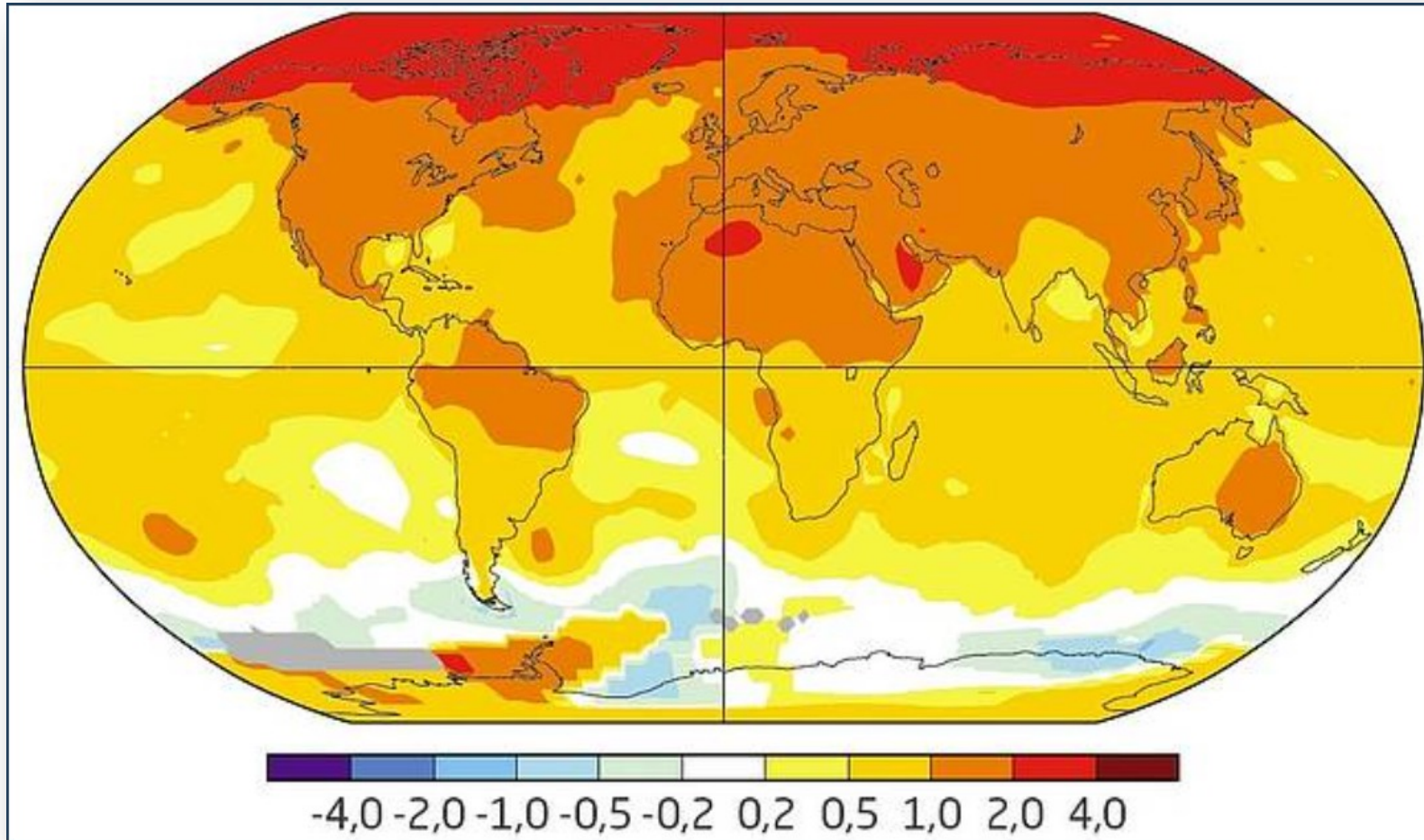


LICEO CLASSICO "GIOACCHINO DA FIORE" - RENDE (CS) - 20/21

Prof.ssa Fabiola Salerno



1979-2000
median

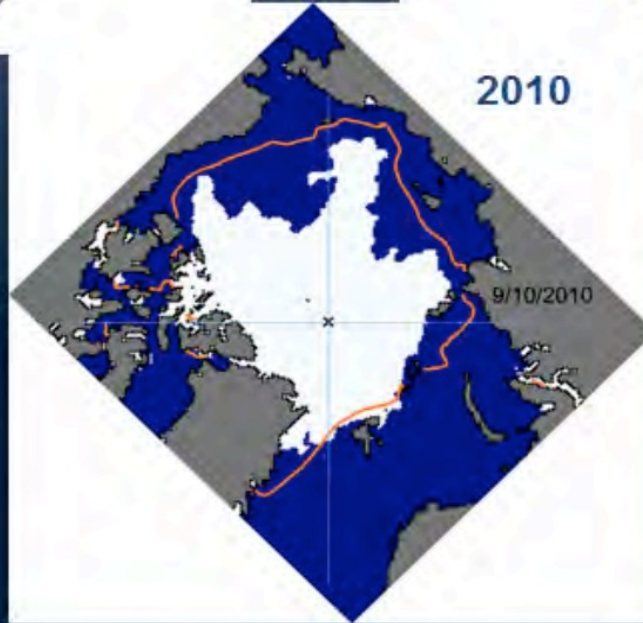


2007

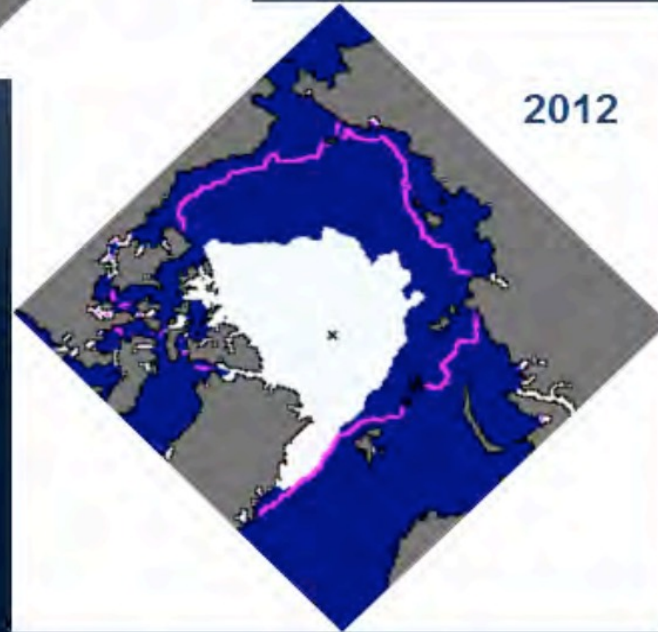


nsidc.org

2010



2012

















ADMIRAL MAKAROV

POLASTERN



KAPITAN DRANITSYN

AKADEMIK FEDOROV



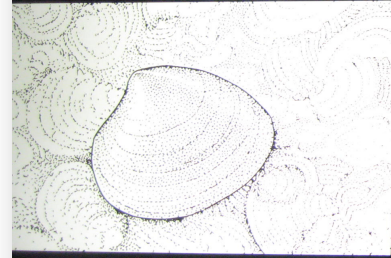
AKADEMIK TRYOSHNIKOV



SONNE AND MARIA S. MERIAN



Can you see any fossils like this?



When you have identified one fossil, you will probably find it easier to spot others. And you may be able to recognize them, even if only small portions are visible. As with the insects in the last exhibit, what you see is changed by what you know.

N NATURAL
HISTORY
MUSEUM

***“WHAT YOU SEE
IS CHANGED BY
WHAT YOU KNOW”***

MOSAIC



International Arctic Drift Expedition

MOSAIC

It is a research mission (**M**ultidisciplinary drifting **O**bservatory for the **S**tudy of the **A**rctic **C**limate).

It left on 20 September 2019 from Tromsø, Norway, on a super modern German icebreaker, the Polarstern, and returned to the port of Bremerhaven, Germany, after 389 days, on 12 October 2020.

It cost about 150 million euros, half of which was provided by the German Research Ministry.

300 scientists from 20 participating countries: Austria, Belgium, Canada, China, Denmark, Finland, France, Germany, Italy, Great Britain, Japan, Korea, the Netherlands, Norway, Poland, Russia, Spain, Sweden, Switzerland and the United States. United States of America.

<https://mosaic-expedition.org/>

The German research icebreaker Polarstern will be at the heart of the expedition.



During the expedition, at least three research aircraft will be deployed.



Surrounding Polarstern, a several-kilometre-wide network of monitoring stations will be set up



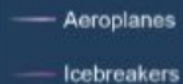
Four icebreakers from Russia, China and Sweden will resupply the expedition with fuel and exchange personnel.



Ice expanse:



Contact routes:



Harbours / Airports:

- 1 Station Nord, Greenland
- 2 Longyearbyen, Svalbard
- 3 Tromsø, Norway