

LICEO CLASSICO "GIOACCHINO DA FIORE" – RENDE (CS) – 21/22  
Prof.ssa Fabiola Salerno

1967  
Germany-born  
Turkish origins  
Father: a surgeon

1965  
Turkey-born  
4-year-old German boy  
Father: a worker



ÖZLEMTÜRECI + UĞURSAHIN

TED

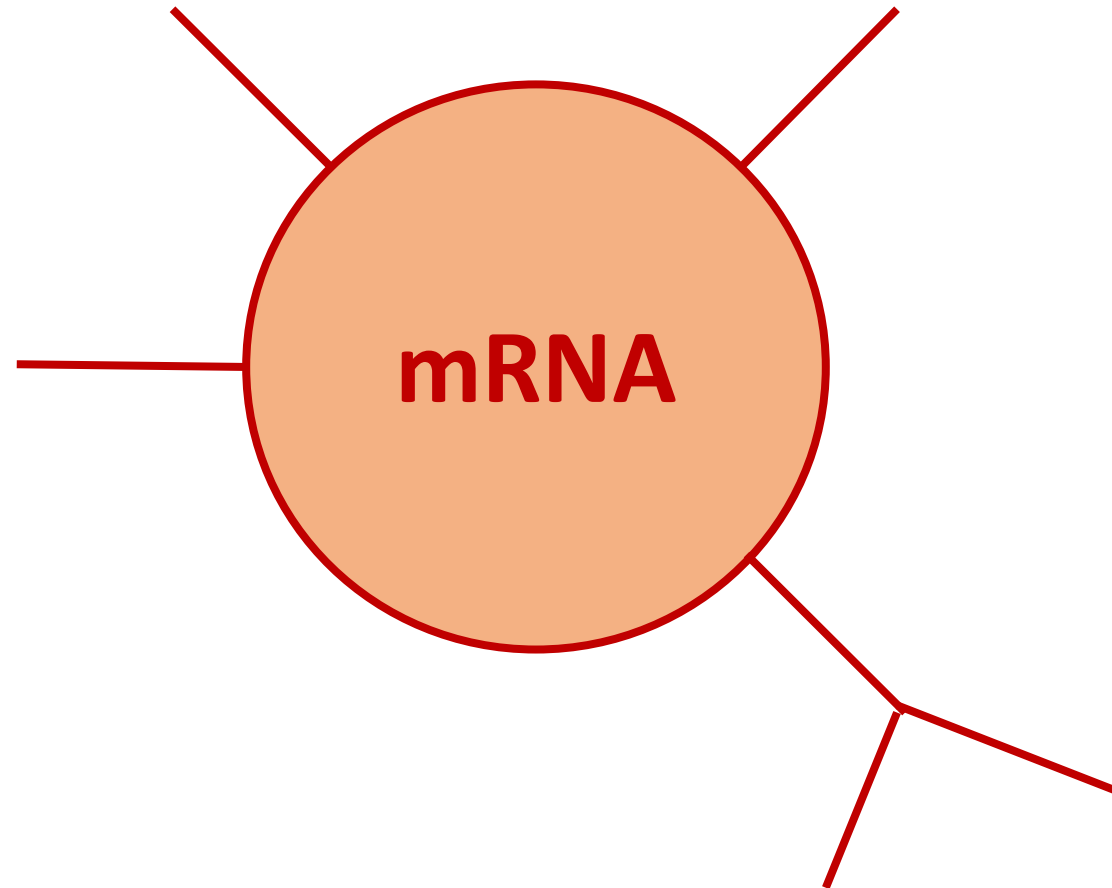
## Listening activity 1

00:00-05:44



# A MIND MAP

from a written text



## Listening activity 2

10:50-13:03



# LOOKING FOR SIMILES AND METAPHORS

**METAPHORS and SIMILES are figures of speech which indicates comparisons**

**A metaphor is an implicit comparison (*You're the sun*)**

**A simile is an explicit comparison, with «like» or «as» to introduce the term of comparison (*You're like the sun*)**

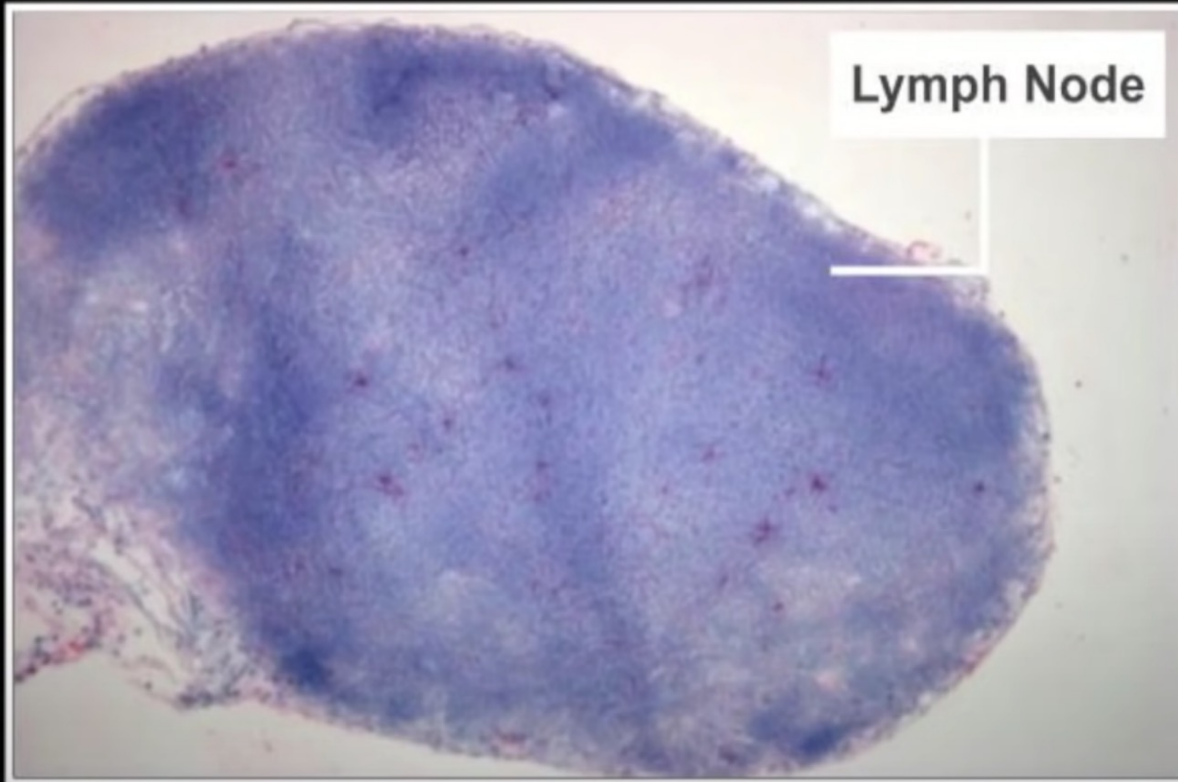
**Here are the three elements which make up both metaphors and similes**

<b>TENOR</b> The subject (the starting point)	<b>COMMON GROUND</b> What the two terms of comparison share	<b>VEHICLE</b> What the subject is compared to (the end point)

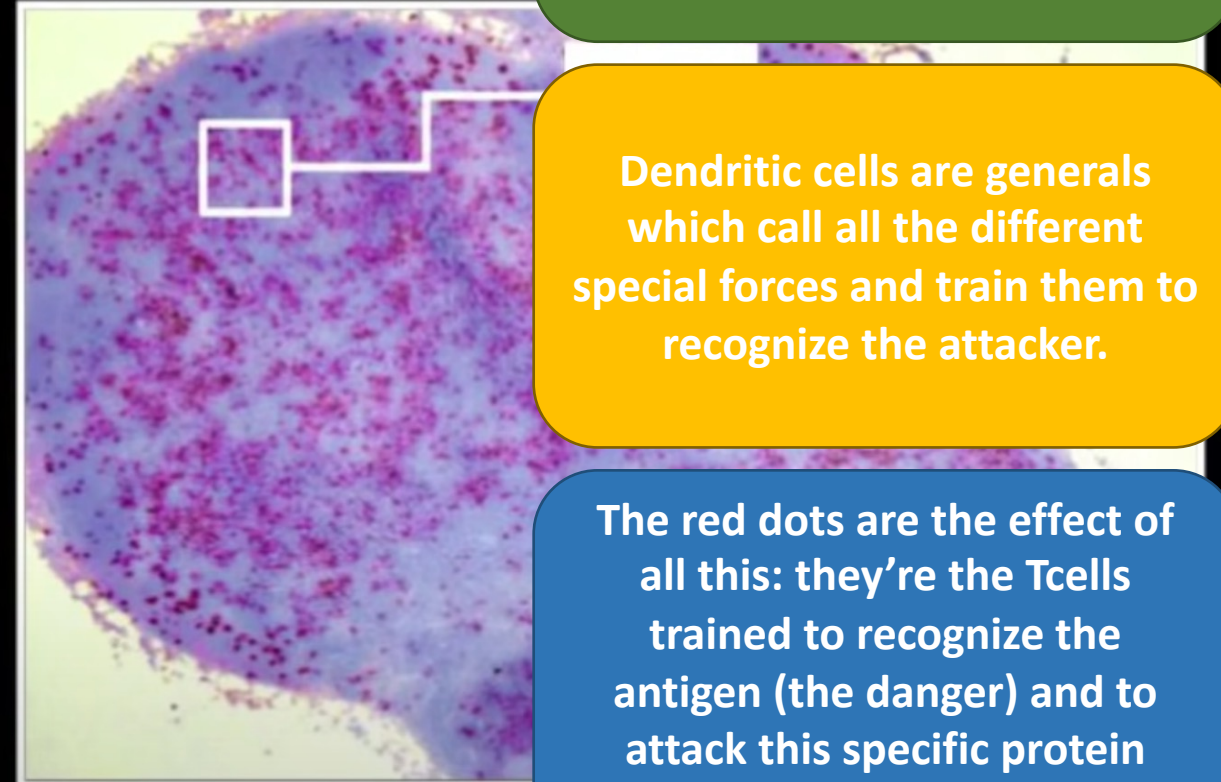
No treatment or vaccination

# Optimized mRNA Vaccine expands T cells

Lymph Node before mRNA vaccine



T cells in Lymph Node



A treated organism: mRNA is carried into lymph nodes to reach very special cells – dendritic cells – the coaches of the immune system.

Dendritic cells are generals which call all the different special forces and train them to recognize the attacker.

The red dots are the effect of all this: they're the T cells trained to recognize the antigen (the danger) and to attack this specific protein encoded by the mRNA









**The words are paraphrased from the Bible**

